



# 2200 ATLANTIC ST.





# LIVE, WORK & PLAY

Building and Land Technology strives to create vibrant and thriving communities for our partners. As a vertically integrated developer with an entrepreneurial spirit, BLT enhances and connects your experiences as you live, work, and play within our communities.

For more information :

**Leslie Whatley**

Executive Vice President

203 644 1577

[lwhatley@bltooffice.com](mailto:lwhatley@bltooffice.com)



# PRIME COMMERCIAL SPACE AVAILABLE

- Water views
- Office suites range from 4,953 to 10,531<sup>RSF</sup>
- Complimentary Shuttle to the Stamford Train Station
- Turnkey spaces
- State-of-the-art fitness facility
- Full-service cafeteria
- Walking distance to retail, restaurant and more
- Security on site
- Convenient access to public transportation
- Live-Work-Play at Harbor Point community
- Trolley connects to downtown





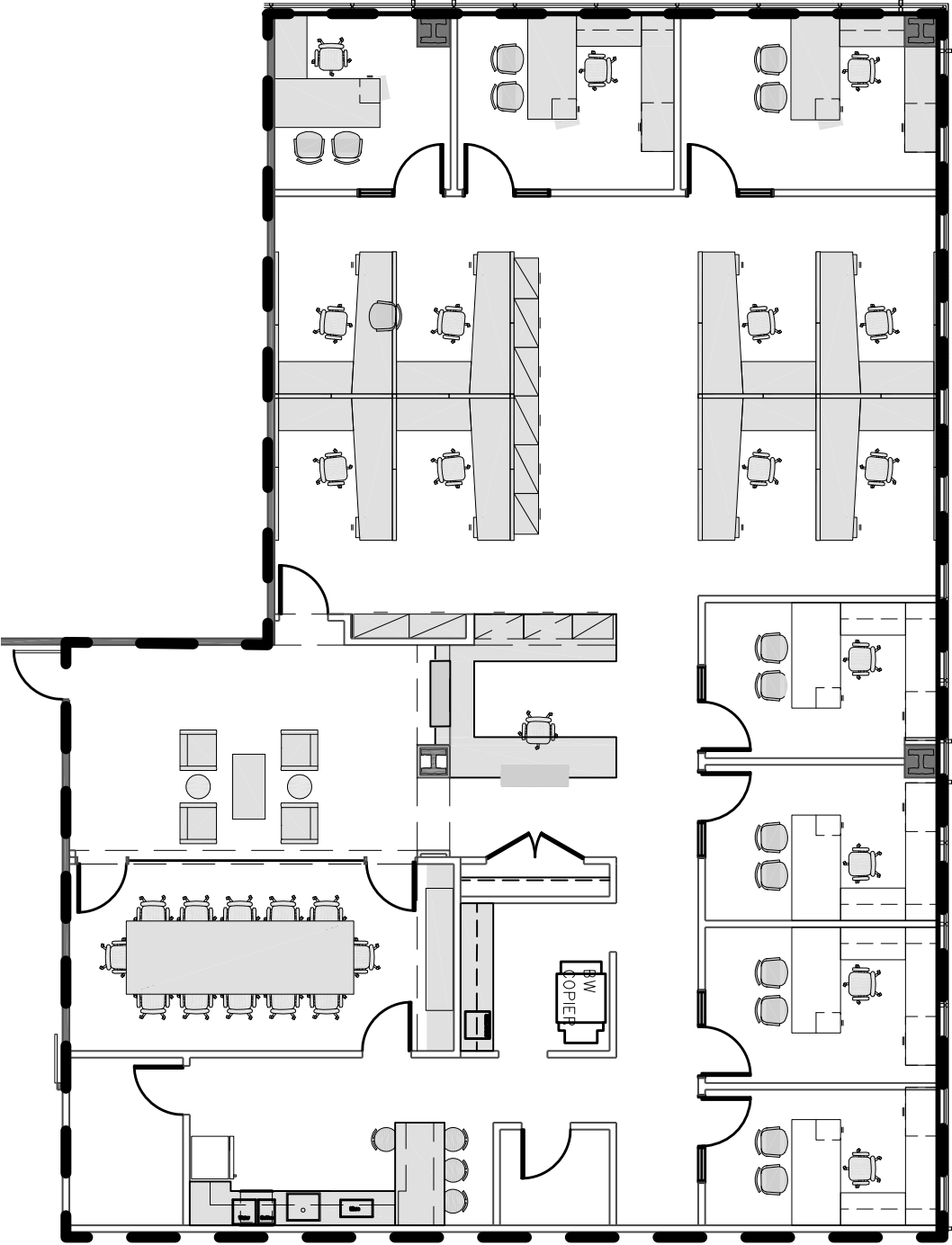
# 2200 ATLANTIC ST.



**2<sup>ND</sup> FLOOR 10,531<sub>RSF</sub>\***

*\*Floor plans are conceptual and do not reflect as-built conditions.*

# 2200 ATLANTIC ST.



**5<sup>TH</sup> FLOOR 4,953<sub>RSF</sub>**





# YOUR DYNAMIC WATERFRONT COMMUNITY

You will find a cosmopolitan flair to the city combined with a laid-back waterfront lifestyle. Comprised of over 200+ events annually, access to free trolleys, water taxis, nearby parks, marinas, award-winning new restaurants, events, and all the boardwalk action!

All this with easy access by free trolley and within minutes to the Train Station. [View Trolley Schedule.](#)

SEE HARBOR POINT IN ACTION!





# 2200 ATLANTIC ST.

LESS THAN 45 MINUTES TO  
NYC  
NEW HAVEN  
MTA Metro-North Railroad  
**Stamford**

**Charter**  
COMMUNICATIONS

10 MINUTE WALK  
TO STAMFORD  
TRAIN STATION

- SIGN WHALES
- Bieringer
- Fortina
- MEXICUE
- Stamford Health
- Stamford
- HBAR
- PALETTE
- PATISSERIE SALZBURG
- HARBOR POINT ORGANIC MARKET
- CORBOS DELI
- googreen



T'S WINE  
BAR + KITCHEN

CVS  
pharmacy

**F45**  
CUGINE'S  
ITALIAN

CISCO BREWERS  
THE VILLAGE  
Cornell University  
Veterinary Specialists

THIRD PLACE

FUTURE  
DEVELOPMENT

HARBOR POINT  
DOG PARK

NV  
HARBOR POINT

Commons  
Park

ALLURE

XENHOUSE

W

HAUTE HEALING  
OASIS

ANTHEM

REVOLUTION  
TRAINING

HINCKLEY

CRAB  
SHELL

HARBOR POINT  
SQUARE  
BEACON  
HARBOR POINT

HARBOR POINT  
WATER TAXI

ESCAPE

sema4

THE MARINAS  
AT HARBOR POINT

WORK  
SPACE  
Building and Land Technology

PRIME  
AN AMERICAN KITCHEN & BAR

HARBOR LANDING  
BOARDWALK

HARBOR POINT  
BOARDWALK

opus.

TRIANGLE  
PARK

KOSCIUSZKO  
PARK

FUTURE  
DEVELOPMENT

FUTURE HARBOR POINT  
BOARDWALK

SoundWaters  
Protecting Long Island Sound through Education

Long Island Sound



# FIND YOURSELF AT HOME & LIVE STEPS AWAY FROM WHERE YOU WORK!

Opus, Anthem, Allure, Beacon, Escape, and NV Apartments offer Studio, 1, 2, 3, and 4 Bedroom apartments, flexible lease terms with furnished or non-furnished options, all complemented by resort-style amenities and ample outdoor space.

For more information :

**Charissa Endsley**

Residential Portfolio Director

203.355.6057

[cendsley@bltoffice.com](mailto:cendsley@bltoffice.com)

Visit [BLTLiveWorkPlay.com](https://www.bltliverworkplay.com) for availability



opus.



ANTHEM



BEACON



ALLURE



ESCAPE



NV@  
HARBOR POINT





# PREFERRED EMPLOYER PROGRAM

As a partner in the Preferred Employer Program, your employees can take advantage of exclusive perks, including discounts throughout Harbor Point. For more information, please contact our corporate leasing representative below.

For more information :

**Charissa Endsley**

Residential Portfolio Director

203.355.6057

cendsley@bltoffice.com

Visit [BLT LiveWorkPlay.com](https://www.bltliveresidential.com) for more information.

# CORPORATE REBATE PROGRAM

Your home at every stage! With a partnership between BLT and William Pitt-Julia B. Fee Sotheby's International Realty, you always find your home with us. For more information, please contact our corporate leasing representative below.

For more information :

**Jane McWilliams**

VP Business Development & Relocation

973.650.2445

jmcwilliams@williampitt.com

For more information visit: [williampitt.com/fairfield](https://www.williampitt.com/fairfield)





# BLT LiveWorkPlay

Please direct all inquiries to

**Leslie Whatley**  
Executive Vice President

203 644 1577  
[lwhatley@bltoffice.com](mailto:lwhatley@bltoffice.com)

**Drew Steinberg**  
Leasing Manager

203 355 6057  
[dsteinberg@bltoffice.com](mailto:dsteinberg@bltoffice.com)