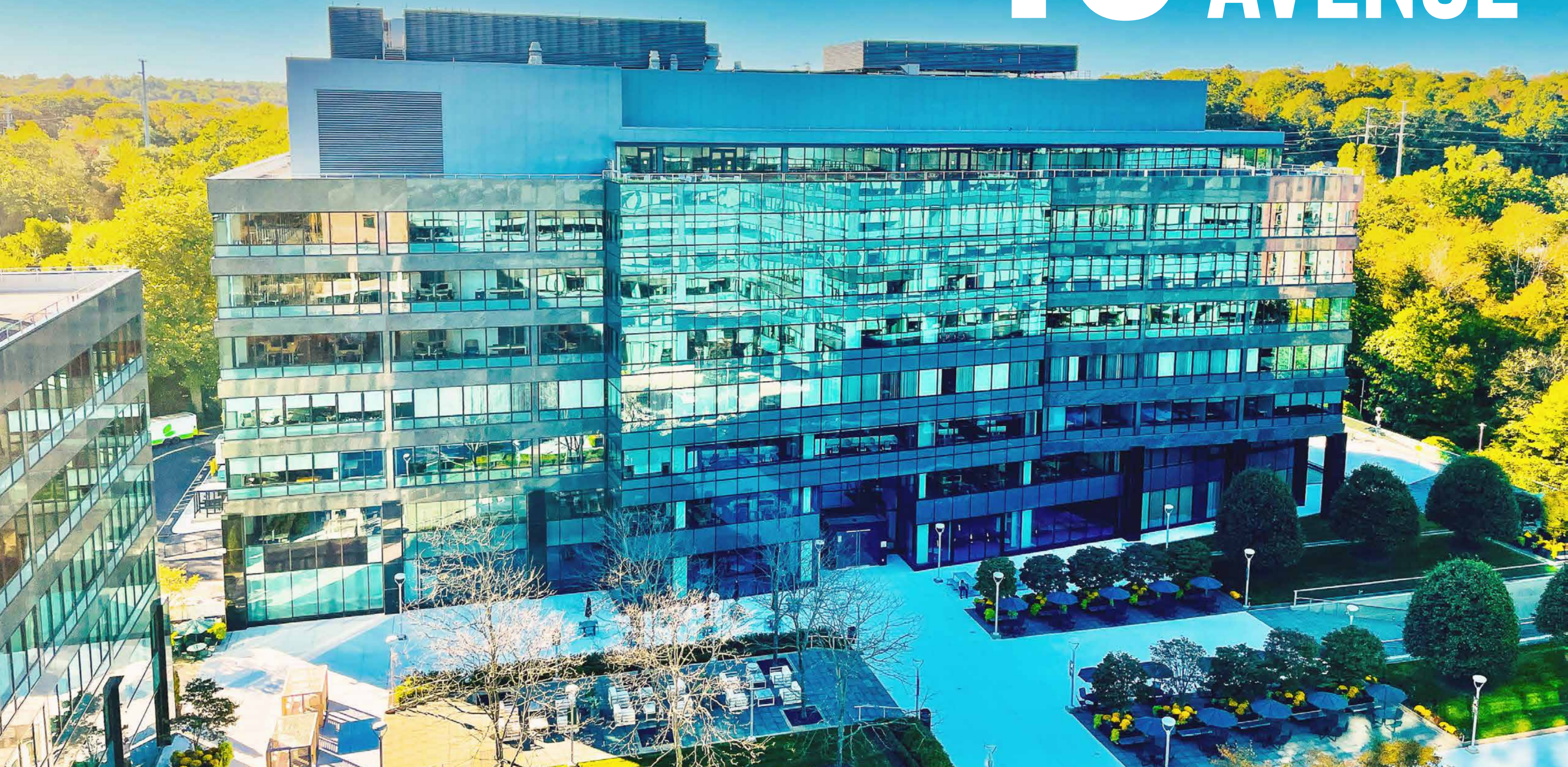


# 45 GLOVER AVENUE







# LIVE, WORK & PLAY

Building and Land Technology strives to create vibrant and thriving communities for our partners. As a vertically integrated developer with an entrepreneurial spirit, BLT enhances and connects your experiences as you live, work, and play within our communities.

For more information :

**Leslie Whatley**

Executive Vice President

203 644 1577

[lwhatley@bltoffice.com](mailto:lwhatley@bltoffice.com)



# PRIME COMMERCIAL SPACE AVAILABLE

- Built spaces available
- Walking distance to the Merritt 7 train station
- Accessible to Route 7, CT-15, and I-95.
- New full-service cafeteria
- New fitness center
- New conference facility
- Activated outdoor space
- Security on site
- Located within a developing Live-Work-Play community
- Class-A property management
- Covered and secure garage
- Helicopter pad on site



*Click image to view video.*





# 45 GLOVER AVENUE 1<sup>ST</sup> FLOOR AMENITY PLAN

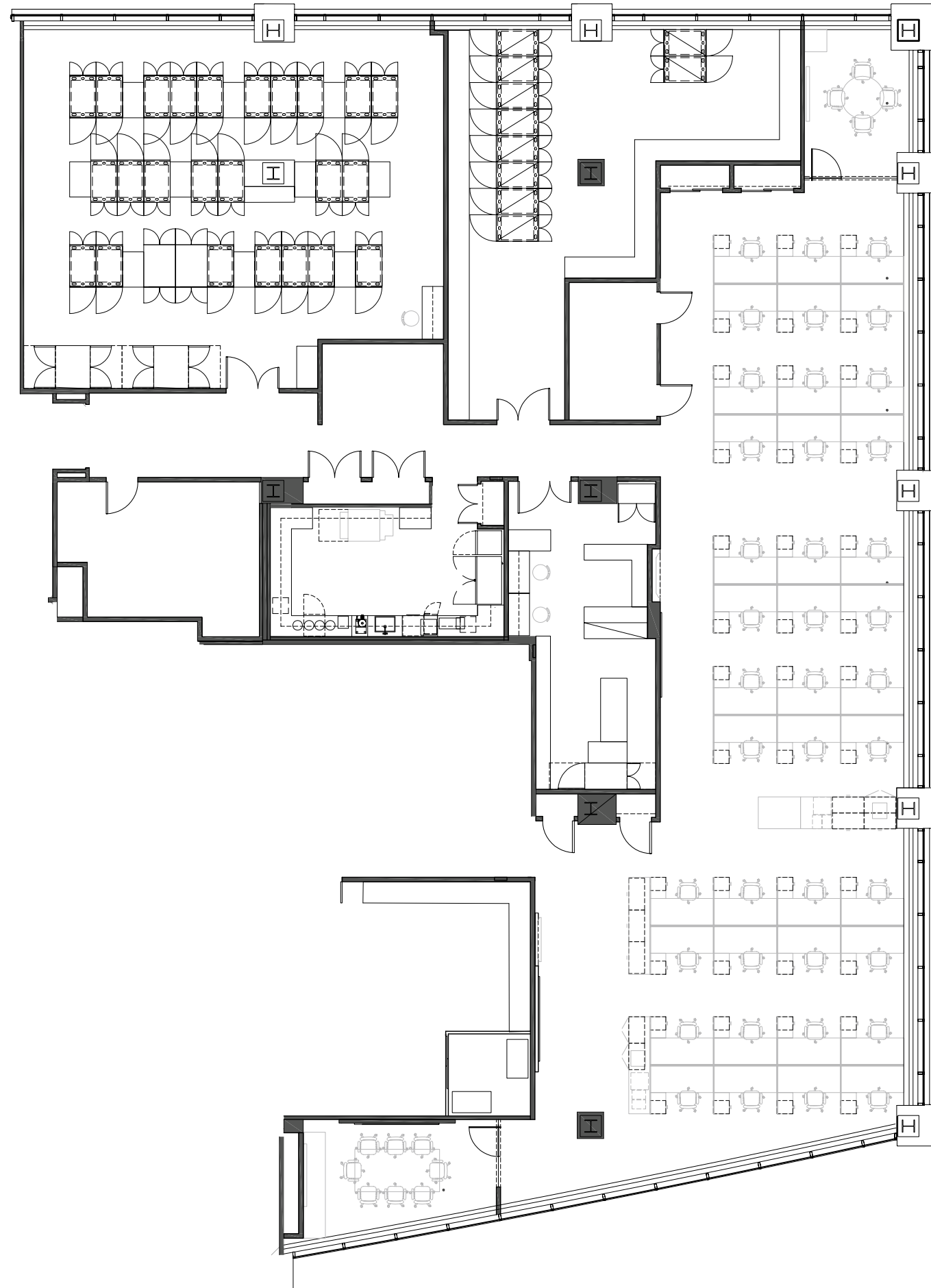


[VIEW TOUR](#)

# 45 GLOVER AVENUE

1<sup>ST</sup> FLOOR

9,854 RSF



# 45 GLOVER AVENUE

3<sup>RD</sup> FLOOR

20,209 RSF\*

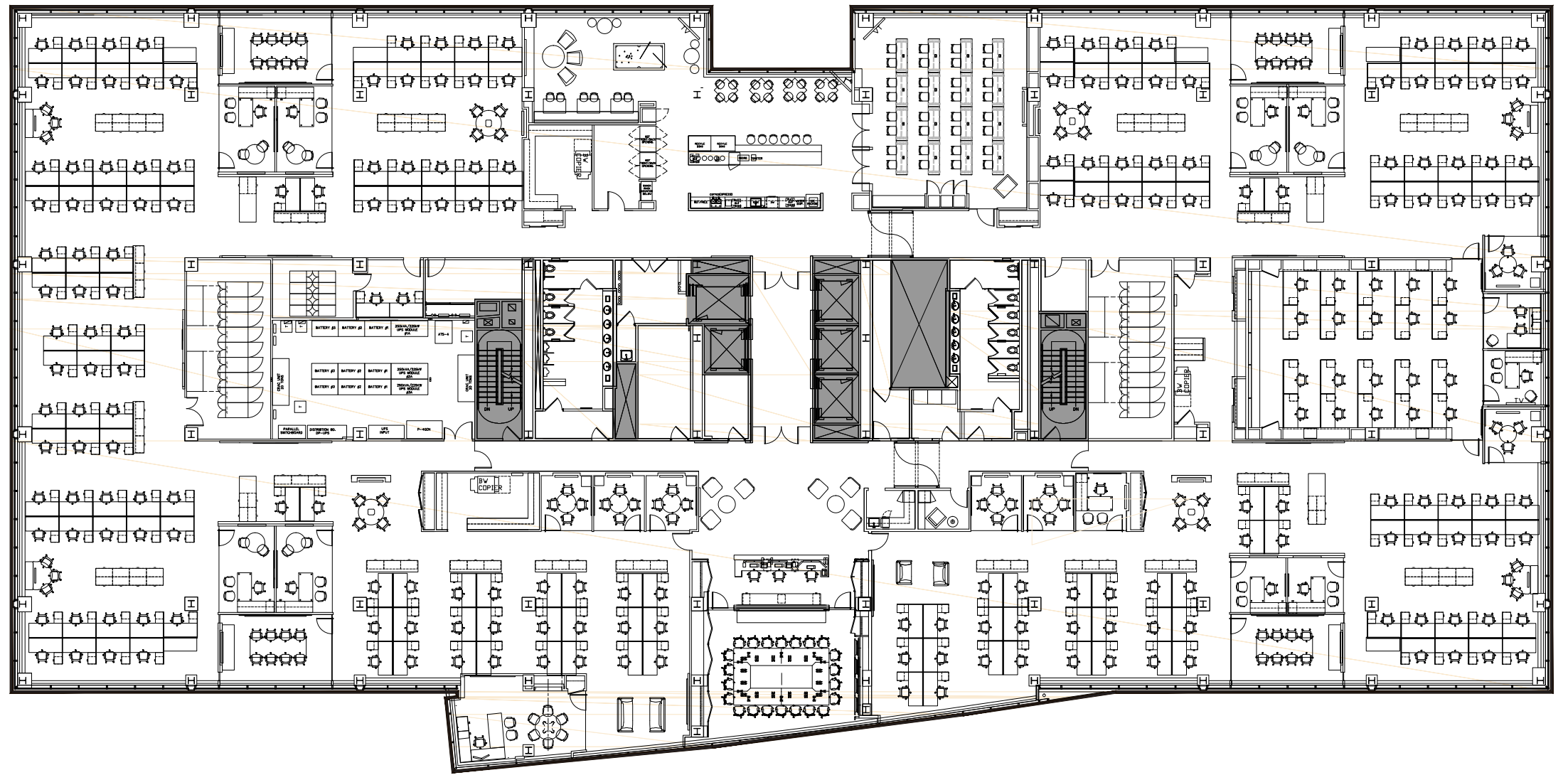
*\*Can be divided*



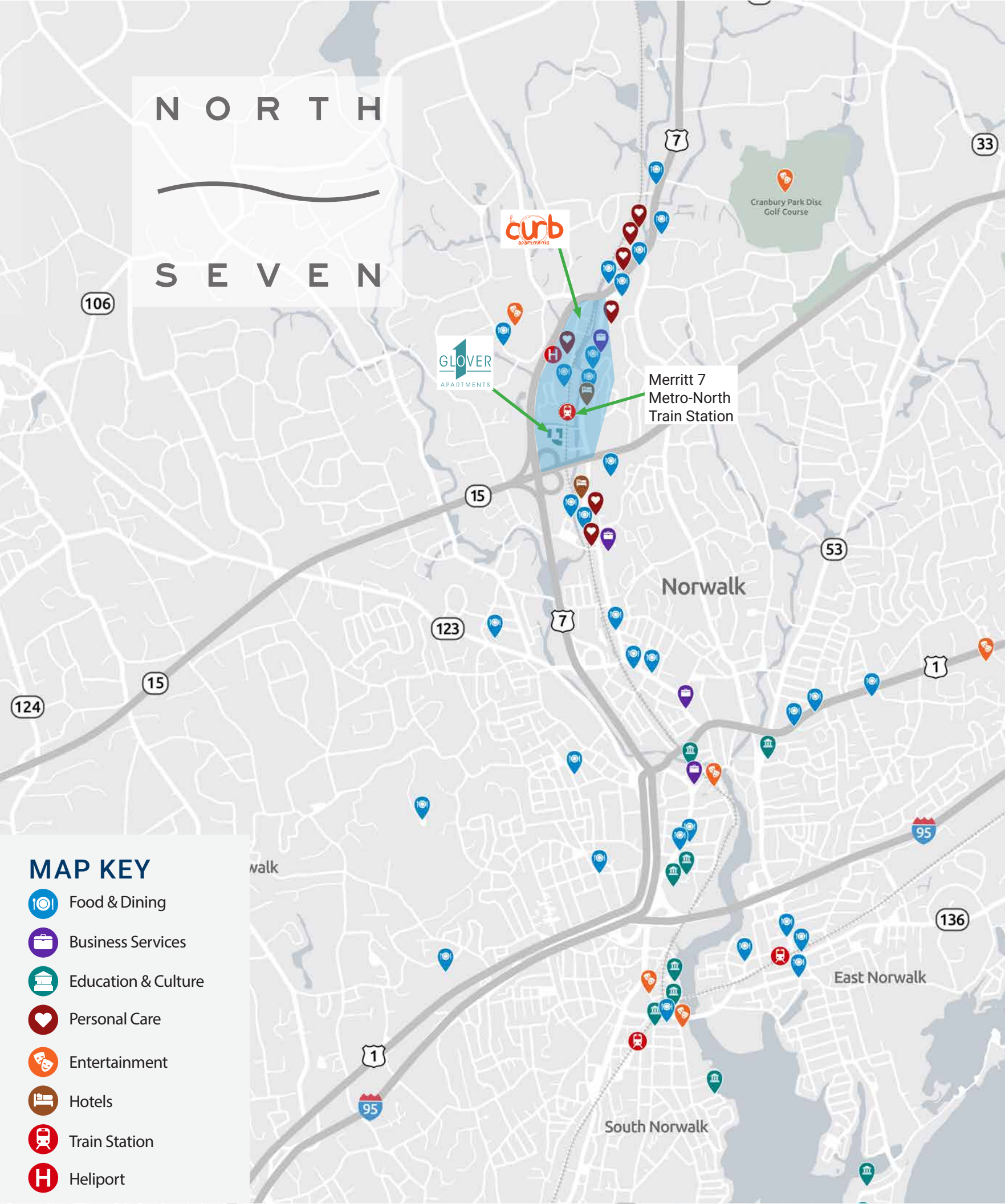
[VIEW TOUR](#)

# 45 GLOVER AVENUE 4<sup>TH</sup> FLOOR 40,718 RSF\*

*\*Can be divided*







# EXPLORE NORTH SEVEN

Perfectly located within 20 minutes to Harbor Point and immediate access to the Merritt Parkway, Route 7, and MetroNorth Train Station to take you to NYC.

You can find parks and over 30 miles of trails in this urban oasis

New dedicated train station







NORDEN INDUSTRIAL DEVELOPMENT

STOP & SHOP & TOTAL WINE

Hotel Zero Degrees

LESS THAN 10 MINUTES TO THE SONO COLLECTION AND 

LGA, JFK & WESTCHESTER COUNTY AIRPORTS LESS THAN ONE HOUR DRIVE TO NEW YORK CITY



10 & 20 GLOVER AVENUE

GLOVER APARTMENTS

FACTSET GE Capital

MERRITT ON THE RIVER APARTMENTS



MERRITT CORPORATE PARK

datto

THE TOWERS

EVEN HOTEL

MERRITT 7 METRO-NORTH

NORTH SEVEN FUTURE DEVELOPMENT

FUTURE NORWALK RIVER VALLEY TRAIL

RETAIL, RESTAURANTS & SERVICES

FRONTIER

SILVERMINE GOLF CLUB

FUTURE NORWALK VALLEY RIVER TRAIL EXTENSION

ROUTE 7

COURTYARD BY MARRIOTT

curb apartments





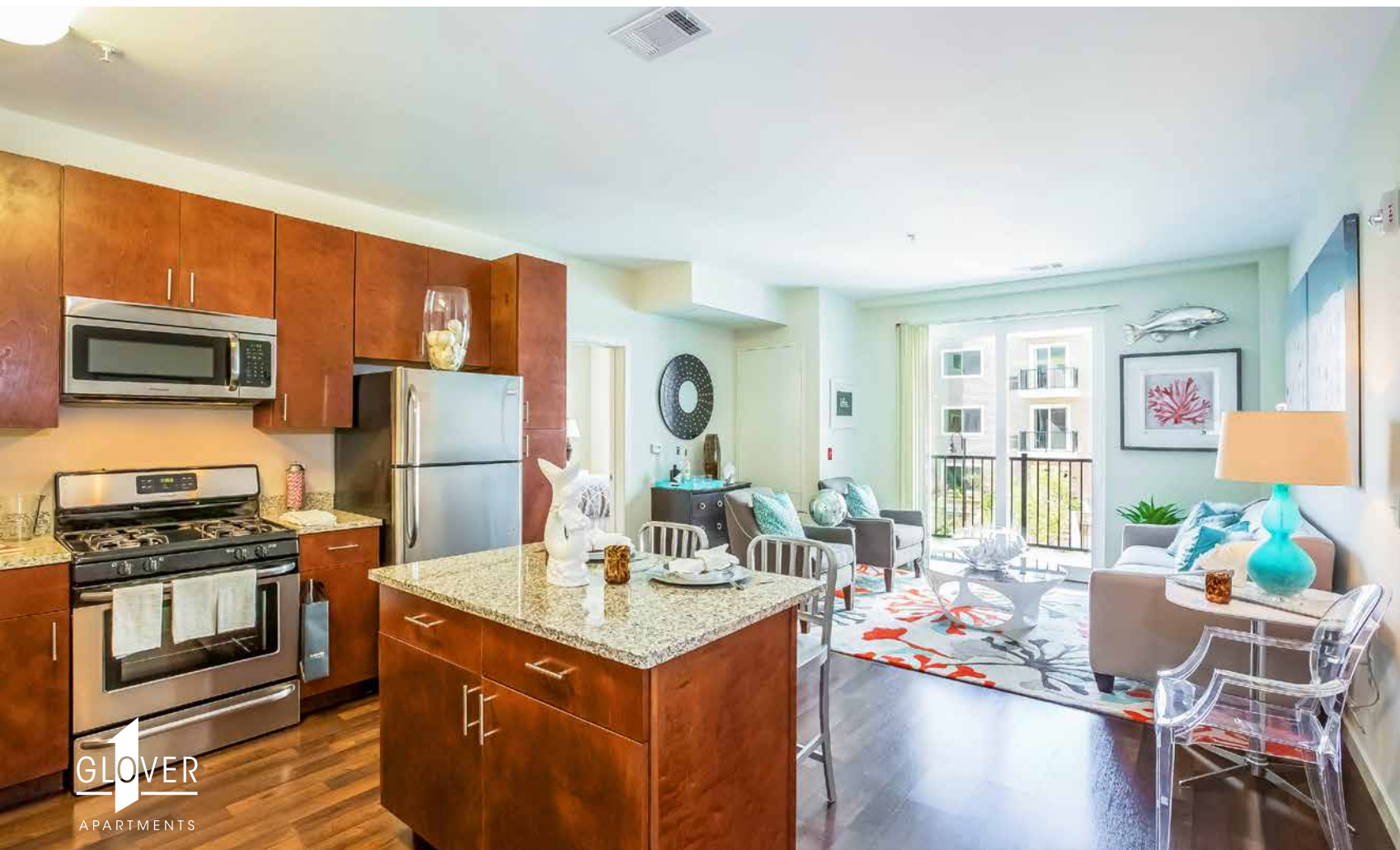
# FIND YOURSELF AT HOME & LIVE STEPS AWAY FROM WHERE YOU WORK!

The Curb Apartments , and One Glover Apartments offer Studio, 1, and 2 Bedroom apartments, flexible lease terms with furnished or non-furnished options, all complemented by resort-style amenities and ample outdoor space.

For more information :

(203) 855-1500

[Leasing@north-seven.com](mailto:Leasing@north-seven.com)



Visit [BLTLiveWorkPlay.com](http://BLTLiveWorkPlay.com) for availability



# CORPORATE REBATE PROGRAM

Your home at every stage! With a partnership between BLT and William Pitt-Julia B. Fee Sotheby's International Realty, you always find your home with us. For more information, please contact our corporate leasing representative below.

For more information :

**JANE MCWILLIAMS**

VP Business Development & Relocation

973.650.2445

[jmcwilliams@williampitt.com](mailto:jmcwilliams@williampitt.com)

For more information vist: [williampitt.com/fairfield](http://williampitt.com/fairfield)



# PREFERRED EMPLOYER PROGRAM

As a partner in the Preferred Employer Program, your employees can take advantage of exclusive perks, including discounts throughout Harbor Point. For more information, please contact our corporate leasing representative below.

For more information :

203.961.5000

[Leasing@BLTLiveWorkPlay.com](mailto:Leasing@BLTLiveWorkPlay.com)

Visit [BLTLiveWorkPlay.com](http://BLTLiveWorkPlay.com) for more information.







# FIND YOUR TRUE NORTH 7

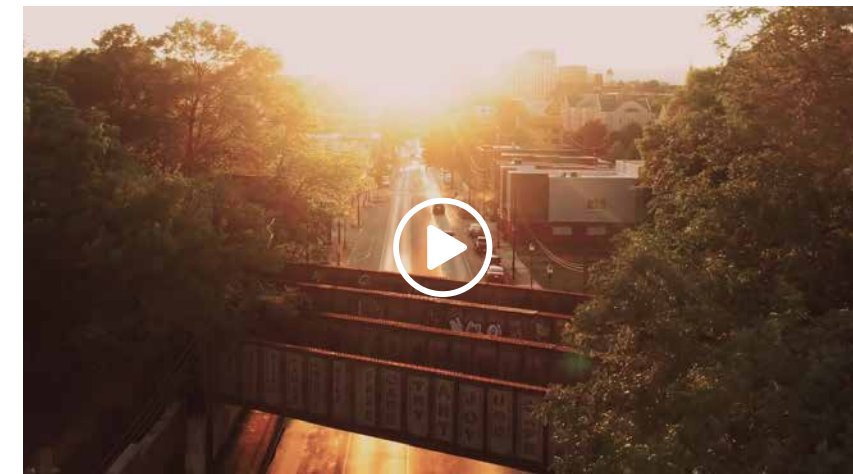


North Seven is a vibrant community designed with the intent to truly embody the concept of LIVE, WORK & PLAY. North Seven is for those who want a little bit of everything in their lives, whether it's shopping, hiking, working, celebrating, or relaxing. You will experience an elevated quality of life all in one place. Everything is within your grasp.



To learn more about North Seven visit: [north-seven.com](http://north-seven.com)

SEE NORTH SEVEN IN ACTION!





# **BLT** LiveWorkPlay

Please direct all inquiries to

**Leslie Whatley**  
Executive Vice President

203 644 1577  
lwhatley@bltoffice.com

**Drew Steinberg**  
Leasing Manager

203 355 6057  
dsteinberg@bltoffice.com