

**2200 ATLANTIC ST.**





# LIVE, WORK & PLAY

Building and Land Technology strives to create vibrant and thriving communities for our partners. As a vertically integrated developer with an entrepreneurial spirit, BLT enhances and connects your experiences as you live, work, and play within our communities.

For more information :

**Leslie Whatley**

Executive Vice President

203 644 1577

[lwhatley@bltooffice.com](mailto:lwhatley@bltooffice.com)

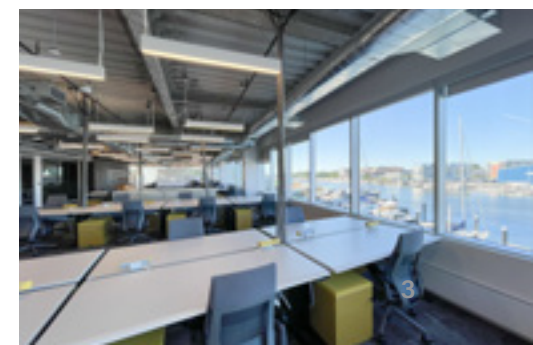
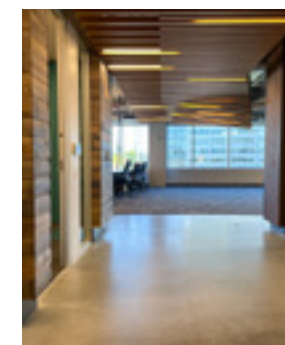
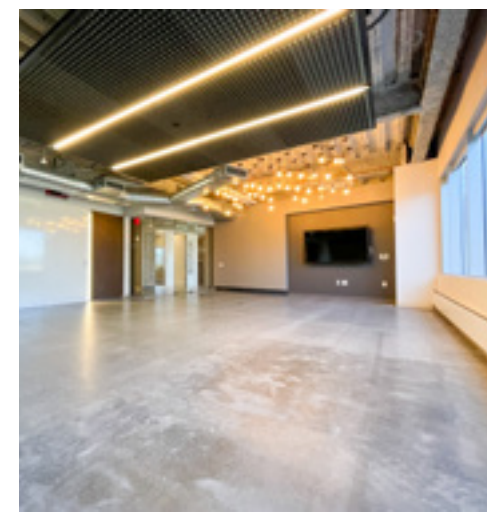
---

**BLT**[LiveWorkPlay.com](https://www.bltooffice.com)



# PRIME COMMERCIAL SPACES AVAILABLE

- Suites range from 11,864<sup>RSF</sup> to 24,432<sup>RSF</sup>
- Waterfront views
- Shuttle to the Stamford Train Station
- Cafeteria and Fitness center
- Available Now
- Built Space
- Fitness facility
- Full-service cafeteria
- Walking distance to retail
- Security on site
- Access to public transportation
- Live-Work-Play at Harbor Point community



HARBOR POINT, STAMFORD



# 2200 ATLANTIC ST.



**2<sup>ND</sup> FLOOR 10,531<sub>RSF</sub>\***

*\*Floor plans are conceptual and do not reflect as-built conditions.*

# 2200 ATLANTIC ST.



## 3<sup>RD</sup> FLOOR 11,730<sub>RSF</sub>\*

*\*Floor plans are conceptual and do not reflect as-built conditions.*



# THE NEIGHBORHOOD

RESTAURANTS  +17

WATERFRONT  +12

COMMERCIAL  +15

RESIDENTIAL  +16

RETAIL  +21

COMMUNITY SERVICES  +6

PARKS/RECREATION  +12

HEALTH & WELLNESS  +5





LESS THAN 45 MINUTES TO  
NYC  
NEW HAVEN  
MTA Metro-North Railroad  
**Stamford**

**Charter**  
COMMUNICATIONS

**2200**  
ATLANTIC ST.

William Pitt  
Julia B Fee  
**Sotheby's**  
INTERNATIONAL REALTY

SIGN WHALES  
mActivity  
Bareburger  
MEXICUE  
HBAR  
PATISSERIE SALZBURG  
HARBOR POINT ORGANIC MARKET  
CORBOS DELI  
gogreen

**95**

T'S WINE  
BAR + KITCHEN

CVS  
pharmacy

**F45**  
THE LILA ROSE

CISCO BREWERS  
THE VILLAGE  
Cornell University  
Veterinary Specialists

**SUBWAY**

TEQUILA ESCAPE  
KITCHEN + BAR

**NV@**  
HARBOR POINT

THIRD PLACE  
REVOLUTION  
TRAINING

HARBOR POINT  
DOG PARK

**Commons**  
Park

**ALLURE**

**XENHOUSE**

**W**

HAUTEHEALING

remedy  
bodyworks

**1 ELMCROFT ROAD**

**KOSCIUSZKO**  
PARK

A 15 MINUTE  
WALK TO  
STAMFORD  
TRAIN STATION

**pus.**

**TRIANGLE**  
PARK

**FUTURE**  
DEVELOPMENT

FUTURE HARBOR POINT  
BOARDWALK

SoundWaters  
Preserving Long Island Sound's Natural Resources

*Long Island Sound*





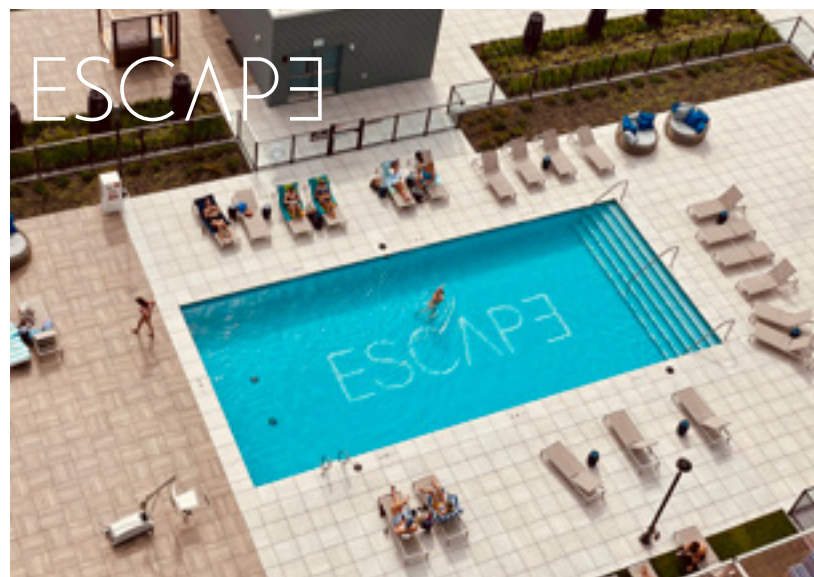
opus.  
COMPOSED BY DETAILS

ALLURE  
LUXURY APARTMENTS AT HARBOR POINT, CT



# FIND YOURSELF AT HOME & LIVE STEPS AWAY FROM WHERE YOU WORK!

Opus, Allure, Beacon, Escape, and NV Apartments offer Studio, 1, 2, 3, and 4 Bedroom apartments, flexible lease terms with furnished or non-furnished options, all complemented by resort-style amenities and ample outdoor space.



Visit [BLTLiveWorkPlay.com](https://BLTLiveWorkPlay.com) for availability



# CORPORATE REBATE PROGRAM

Your home at every stage! With a partnership between BLT and William Pitt-Julia B. Fee Sotheby's International Realty, you always find your home with us. For more information, please contact our corporate leasing representative below.

**JANE MCWILLIAMS**

VP Business Development & Relocation

973.650.2445

[jmcwilliams@williampitt.com](mailto:jmcwilliams@williampitt.com)

For more information visit: [williampitt.com/fairfield](http://williampitt.com/fairfield)



## PREFERRED EMPLOYER PROGRAM

As a partner in the Preferred Employer Program, your employees can take advantage of exclusive perks, including discounts throughout Harbor Point. For more information, please contact our corporate leasing representative below.

**Charissa Endsley**

Residential Portfolio Director

203.355.6057

[cendsley@bltoffice.com](mailto:cendsley@bltoffice.com)

Visit [BLTLiveWorkPlay.com](http://BLTLiveWorkPlay.com) for more information.







# YOUR DYNAMIC WATERFRONT COMMUNITY

You will find a cosmopolitan flair to the city combined with a laid-back waterfront lifestyle. Comprised of over 200+ events annually, access to free trolleys, water taxis, nearby parks, marinas, award-winning new restaurants, events, and all the boardwalk action!

All this with easy access by free trolley and within minutes to the Train Station.

SEE HARBOR POINT IN ACTION!



To learn more about Harbor Point visit: [www.harborpt.com](http://www.harborpt.com)

For more information about the trolley visit:  
[www.bltliveworkplay.com/apartments/stamford/harbor-point/access/trolley-info-page/](http://www.bltliveworkplay.com/apartments/stamford/harbor-point/access/trolley-info-page/)





# BLT LiveWorkPlay

Please direct all inquiries to

**Leslie Whatley**  
Executive Vice President

203 644 1577  
[lwhatley@bltooffice.com](mailto:lwhatley@bltooffice.com)

**Drew Steinberg**  
Leasing Manager

203 355 6057  
[dsteinberg@bltooffice.com](mailto:dsteinberg@bltooffice.com)