



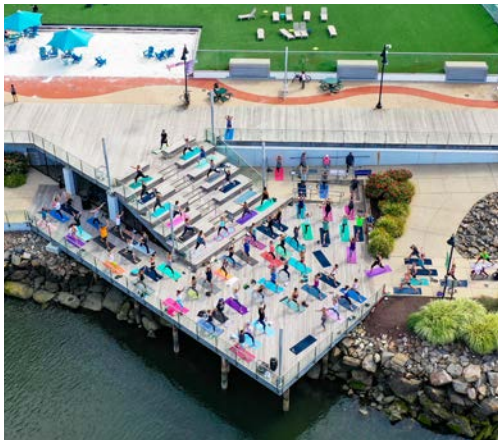
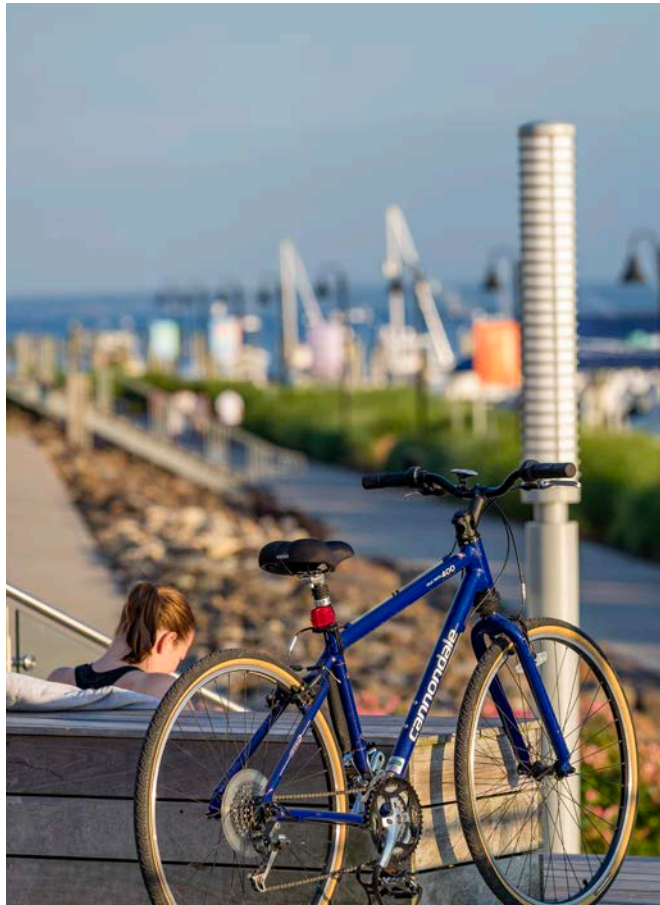
# 2200 ATLANTIC ST.



# LIVE, WORK & PLAY

Building and Land Technology strives to create vibrant and thriving communities for our partners. As a vertically integrated developer with an entrepreneurial spirit, BLT enhances and connects your experiences as you live, work, and play within our communities.

Discover the perfect blend of cosmopolitan flair and laid-back waterfront living at Harbor Point. Our three marinas—Harbor Point North, East, and West—offer over 200 slips for vessels from 20’ to 120’ in length. Nestled along the Long Island Sound, our marinas provide access to a vibrant community with 200+ annual events, complimentary trolleys to the train station, water taxis, nearby parks, and award-winning restaurants.



SEE HARBOR POINT IN ACTION!

Check out our channels!



[BLTLiveWorkPlay.com](http://BLTLiveWorkPlay.com)

# 2200 ATLANTIC ST.

LESS THAN 45 MINUTES TO  
NYC  
NEW HAVEN  
MTA Metro-North Railroad  
**Stamford**

**Charter**  
COMMUNICATIONS

10 MINUTE WALK  
TO STAMFORD  
TRAIN STATION

- SIGN WHALE
- Bareburger
- Fortina
- ELEVATE FITNESS
- MEXICUE
- STAMFORD HEALTH
- Spiral
- HBAR SALON
- PINOT PALETTE
- William Pitt Julia B Fee
- Sotheby's INTERNATIONAL REALTY
- Harbor Point WINES & SPIRITS
- PATISSERIE SALZBURG
- HARBOR POINT ORGANIC MARKET
- CORBOS DELI
- goqreen



THIRD PLACE

T'S WINE BAR + KITCHEN

CVS pharmacy

F45

CISCO BREWERS THE VILLAGE  
Cornell University Veterinary Specialists

TEQUILA ESCAPE KITCHEN + BAR

NV@ HARBOR POINT

FUTURE DEVELOPMENT

HARBOR POINT DOG PARK

Commons Park

ALLURE

XENHOUSE

WATERBURY SCHOOL

REVOLUTION TRAINING

HINCKLEY

HARBOR POINT SQUARE BEACON  
HARBOR POINT

HARBOR POINT WATER TAXI

ESCAPE

ANTHEM

HAUTE HEALING

HARBOR PETS

WORK SPACE  
Building and Land Technology

PRIME  
AN AMERICAN KITCHEN & BAR

HARBOR LANDING BOARDWALK

HARBOR POINT BOARDWALK

opus.

KOSCIUSZKO PARK

TRIANGLE PARK

FUTURE DEVELOPMENT

FUTURE HARBOR POINT BOARDWALK

SoundWaters  
Protecting Long Island Sound through Education

Long Island Sound

# UNLIMITED ACCESS



## WATER TAXI

Seasonal Passenger Travel From Harbor Point to Harbor Landing

Access to Stamford's Most Prestigious Restaurants

Immediate Access to Harbor Point Marinas



## CAR

Easily Accessible to Harbor Point and I-95

Less Than 10 Minutes From Merritt Parkway

Less Than 50 Min Drive From New York City

On-site Covered Parking Available at 3 per 1,000 sq ft



## TRAIN

Immediate Proximity to Stamford Train Station, Metro North, Amtrak, NE Regional and Acela

Seamless Access for Daily Commuting

Direct Access to Grand Central Station and Fairfield County Locations



## BICYCLE

Access for Environmentally Conscious Community

Storage Available Within The Garage

Bike Paths and Trails Available in Harbor Point



## HARBOR POINT TROLLEY

Fast and Free Direct Commuter Loop to Stamford Station

Free Downtown Stamford Loop

Access to Point of Interest Locations



## WALKING

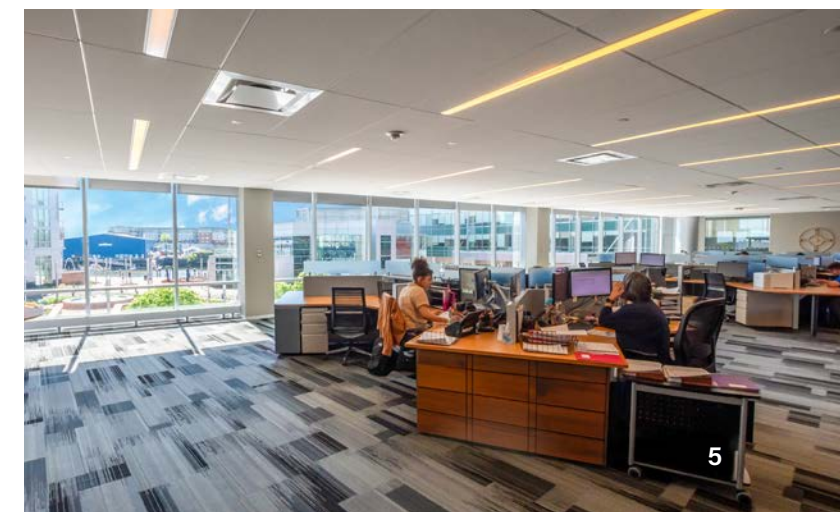
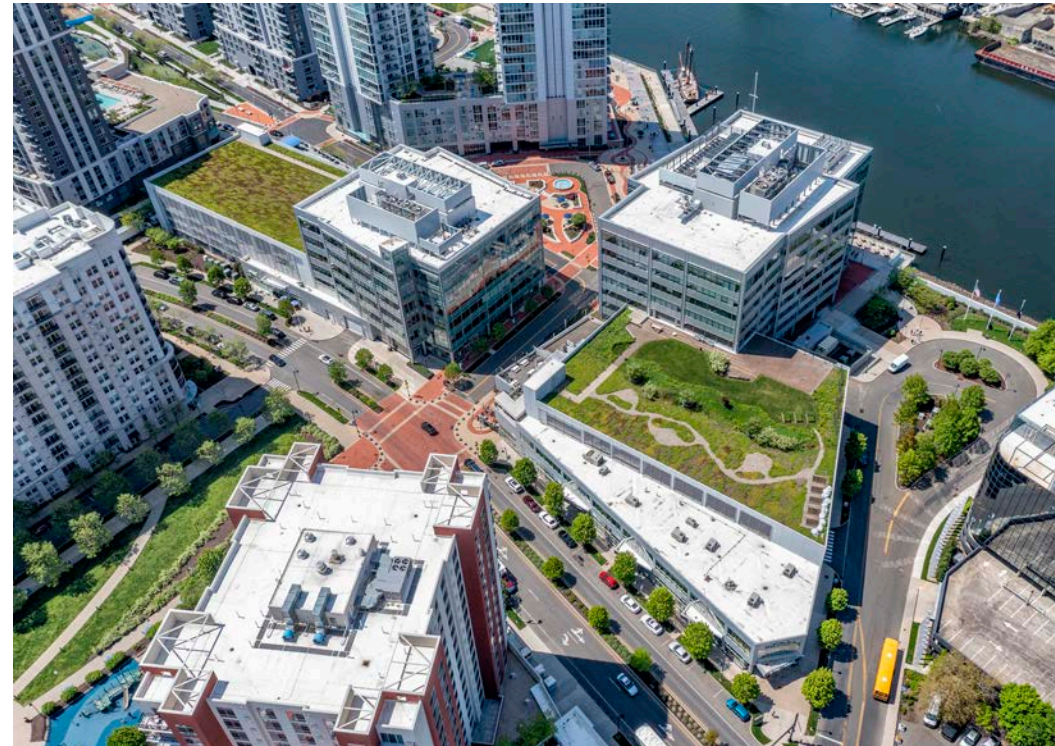
.5 Mile Walk to the Stamford Station

Immediate Proximity to Retail, Dining, and Entertainment

Nestled Within the Dynamic Live-Work-Play Ecosystem

# PRIME COMMERCIAL SPACE AVAILABLE

- Located in Harbor Point, a Live Work Play Community
- Waterfront Location with Long Island Sound Views
- Immediate Proximity to Restaurants, Retail, and Public Outdoor Spaces
- Full Service Café with Outdoor Seating
- State of the Art Fitness Center
- Complimentary Trolley Service with Connection to The Stamford Train Station and Downtown Stamford
- On Site Security with Covered Parking
- Adjacent to The Marinas at Harbor Point



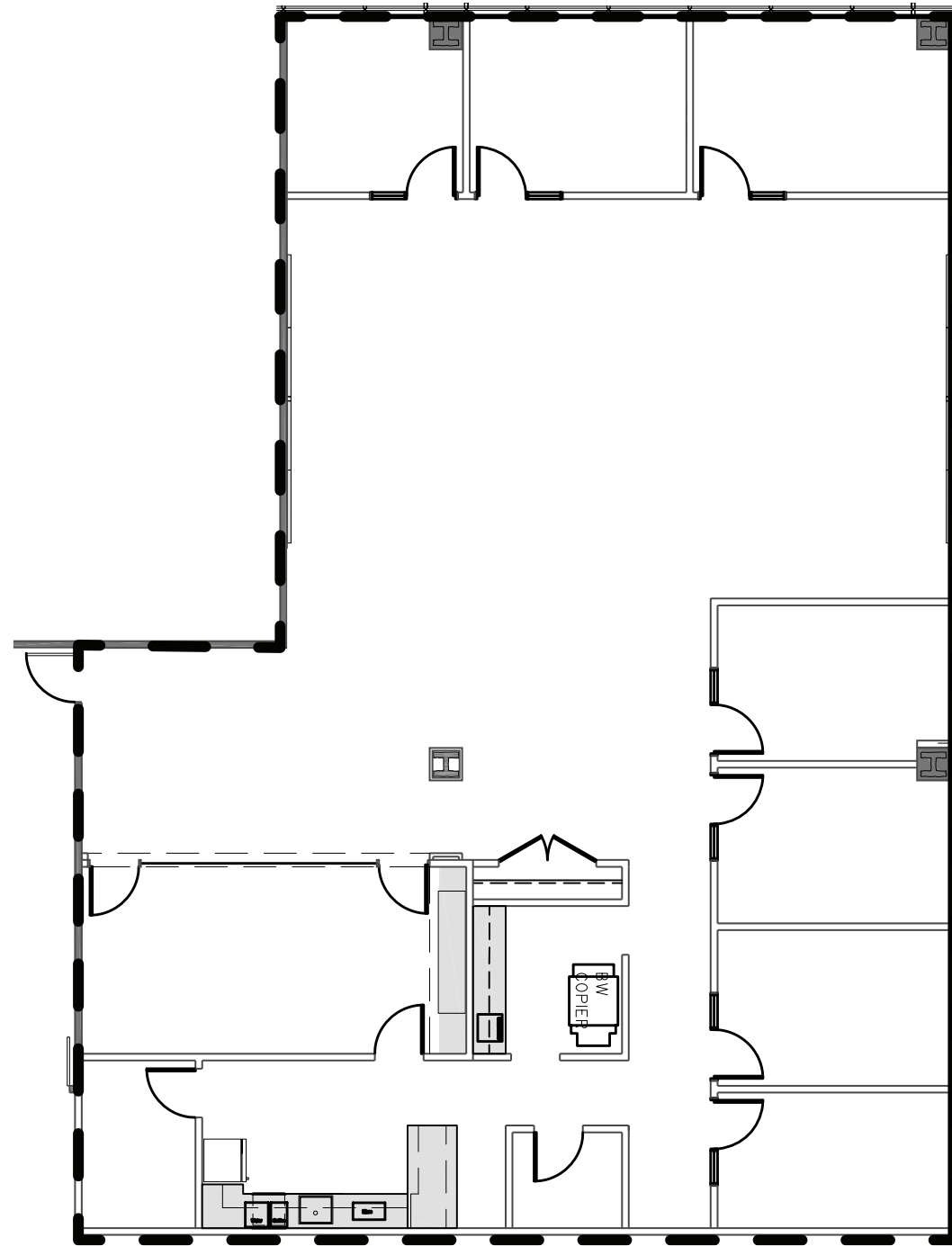
# 2200 ATLANTIC ST.



**2<sup>ND</sup> FLOOR 10,531 RSF\***

**\*FLOOR PLANS ARE CONCEPTUAL AND DO NOT REFLECT AS-BUILT CONDITIONS.**

# 2200 ATLANTIC ST.



**5<sup>TH</sup> FLOOR 4,953<sub>RSF</sub>**

# FIND YOURSELF AT HOME & LIVE STEPS AWAY FROM WHERE YOU WORK!

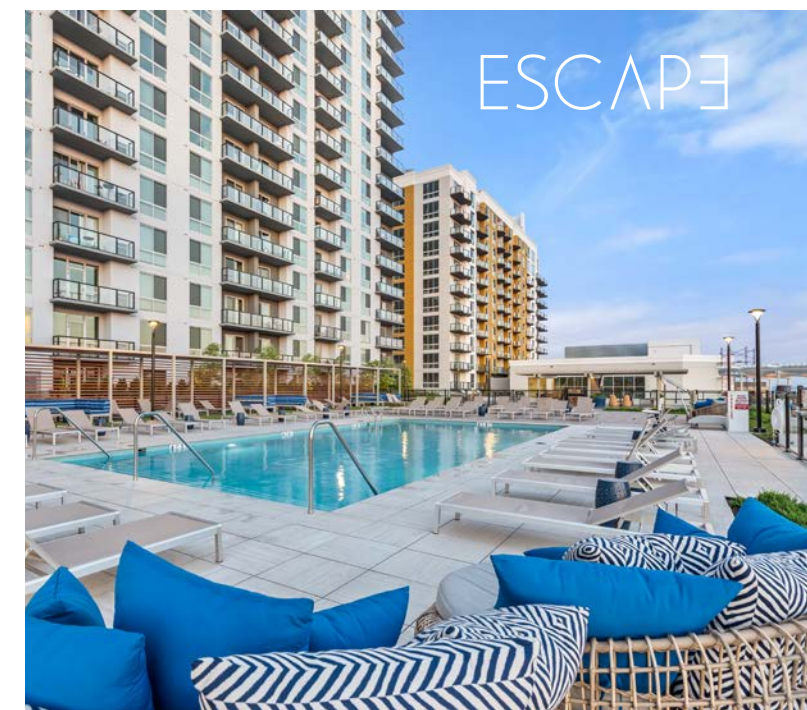
Opus, Anthem, Allure, Beacon, Escape, and NV Apartments offer Studio, 1, 2, 3, and 4 Bedroom apartments, flexible lease terms with furnished or non-furnished options, all complemented by resort-style amenities and ample outdoor space.

For more information :

203.961.5000

Leasing@BLTLiveWorkPlay.com

Visit [BLTLiveWorkPlay.com](https://www.BLTLiveWorkPlay.com) for availability







# PREFERRED EMPLOYER PROGRAM

As a partner in the Preferred Employer Program, your employees can take advantage of exclusive perks, including discounts throughout Harbor Point. For more information, please contact our corporate leasing representative below.

For more information :  
203.961.5000  
[Leasing@BLTLiveWorkPlay.com](mailto:Leasing@BLTLiveWorkPlay.com)

Visit [BLTLiveWorkPlay.com](https://www.bltliveworkplay.com) for more information.

# CORPORATE REBATE PROGRAM

Your home at every stage! With a partnership between BLT and William Pitt-Julia B. Fee Sotheby's International Realty, you always find your home with us. For more information, please contact our corporate leasing representative below.

For more information :

**Jane Mcwilliams**

VP Business Development & Relocation  
973.650.2445  
[jmcwilliams@williampitt.com](mailto:jmcwilliams@williampitt.com)

For more information visit: [williampitt.com/fairfield](https://www.williampitt.com/fairfield)



# BLT LiveWorkPlay

Please direct all inquiries to

**Leslie Whatley**  
Executive Vice President

203 644 1577  
lwhatley@bltooffice.com

**Brian Carcaterra**  
Executive Vice President

203 355 6017  
bcarcaterra@bltooffice.com

**Drew Steinberg**  
Leasing Manager

203 355 6057  
dsteinberg@bltooffice.com