



# 2200 ATLANTIC ST.





# LIVE, WORK & PLAY

Building and Land Technology strives to create vibrant and thriving communities for our partners. As a vertically integrated developer with an entrepreneurial spirit, BLT enhances and connects your experiences as you live, work, and play within our communities.

For more information :

**Leslie Whatley**

Executive Vice President

203 644 1577

[lwhatley@bltoffice.com](mailto:lwhatley@bltoffice.com)



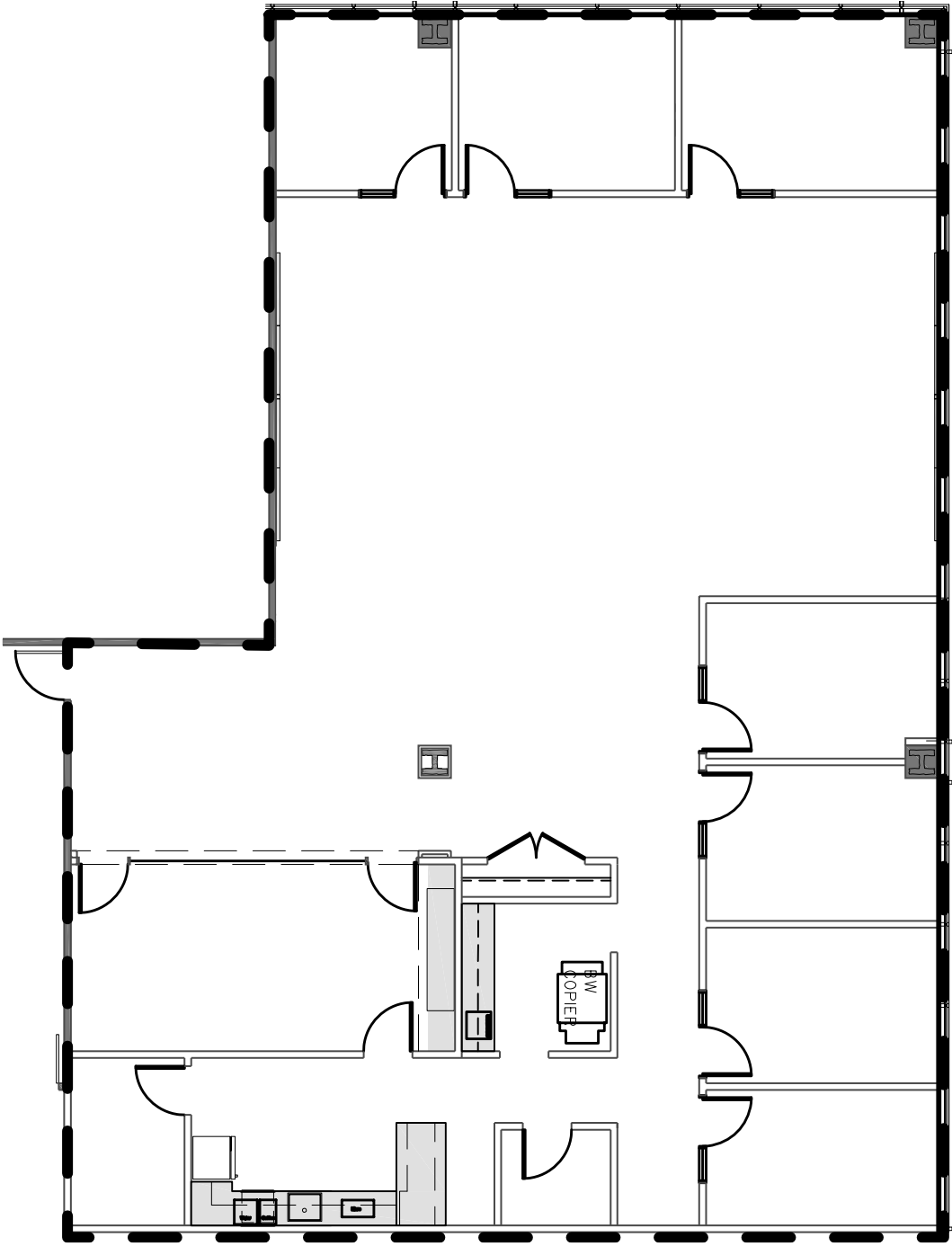
# PRIME COMMERCIAL SPACE AVAILABLE

- Water views
- Complimentary Shuttle to the Stamford Train Station
- Turnkey spaces
- State-of-the-art fitness facility
- Full-service cafeteria
- Walking distance to retail, restaurant and more
- On site security
- Convenient access to public transportation
- Trolley connection to downtown and the Stamford Transportation Center
- Live-Work-Play in the Harbor Point community





# 2200 ATLANTIC ST.



**5<sup>TH</sup> FLOOR 4,953<sub>RSF</sub>**



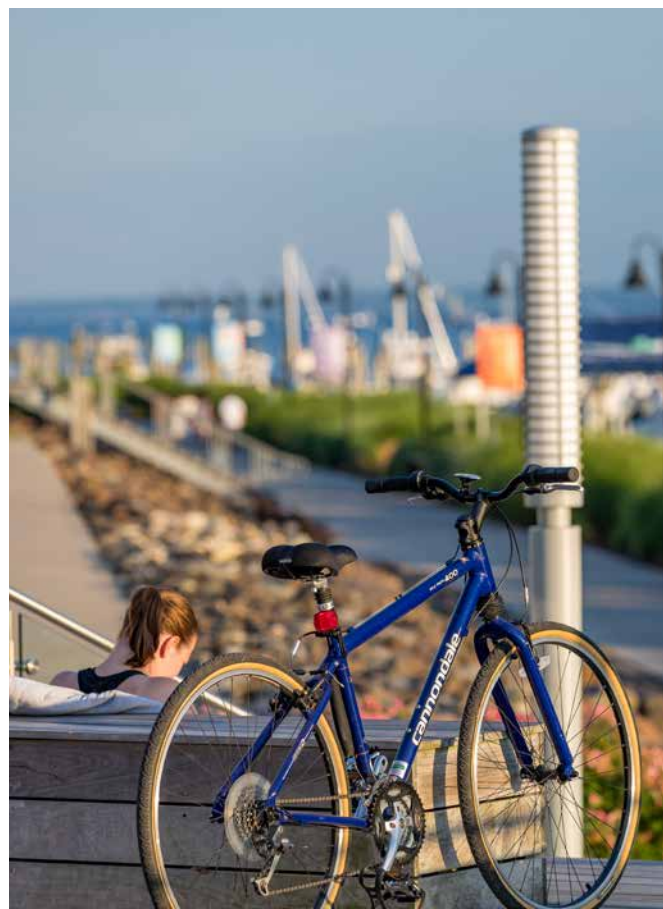


# YOUR DYNAMIC WATERFRONT COMMUNITY

You will find a cosmopolitan flair to the city combined with a laid-back waterfront lifestyle. Comprised of over 200+ events annually, access to free trolleys, water taxis, nearby parks, marinas, award-winning new restaurants, events, and all the boardwalk action!

All this with easy access by free trolley and within minutes to the Train Station. [View Trolley Schedule.](#)

SEE HARBOR POINT IN ACTION!





# 2200 ATLANTIC ST.

LESS THAN 45 MINUTES TO  
NYC  
NEW HAVEN  
MTA Metro-North Railroad  
**Stamford**

**Charter**  
COMMUNICATIONS

10 MINUTE WALK  
TO STAMFORD  
TRAIN STATION

- SIGN WHALE
- Bareburger
- Fortina
- ELEVATE FITNESS
- MEXICUE
- STAMFORD HEALTH
- Spiral
- HBAR SALON
- PINOT'S PALETTE
- William Pitt Julia B Fee
- Sotheby's
- Harbor Point WINES & SPIRITS
- PATISSERIE SALZBURG
- HARBOR POINT ORGANIC MARKET
- CORBOS DELI
- goqreen



T'S WINE  
BAR + KITCHEN

CVS  
pharmacy

F45

CISCO BREWERS  
THE VILLAGE  
Cornell University  
Veterinary Specialists

TEQUILA ESCAPE  
KITCHEN + BAR

REVOLUTION  
TRAINING

HARBOR PETS

KOSCIUSZKO  
PARK

FUTURE  
DEVELOPMENT

FUTURE HARBOR POINT  
BOARDWALK

Long Island Sound

SoundWaters  
Protecting Long Island Sound through Education

HINCKLEY

HARBOR POINT  
SQUARE  
BEACON  
HARBOR POINT

HARBOR POINT  
WATER TAXI

THE MARINAS  
AT HARBOR POINT

HARBOR LANDING  
BOARDWALK

HARBOR POINT  
BOARDWALK

ESCAPE

ALLURE

XENHOUSE

ANTHEM

HAUTE HEALING  
GASTRO

BEAN

opus.

TRIANGLE  
PARK

PRIME  
AN AMERICAN KITCHEN & BAR

WORK  
SPACE  
Building and Land Technology



# FIND YOURSELF AT HOME & LIVE STEPS AWAY FROM WHERE YOU WORK!

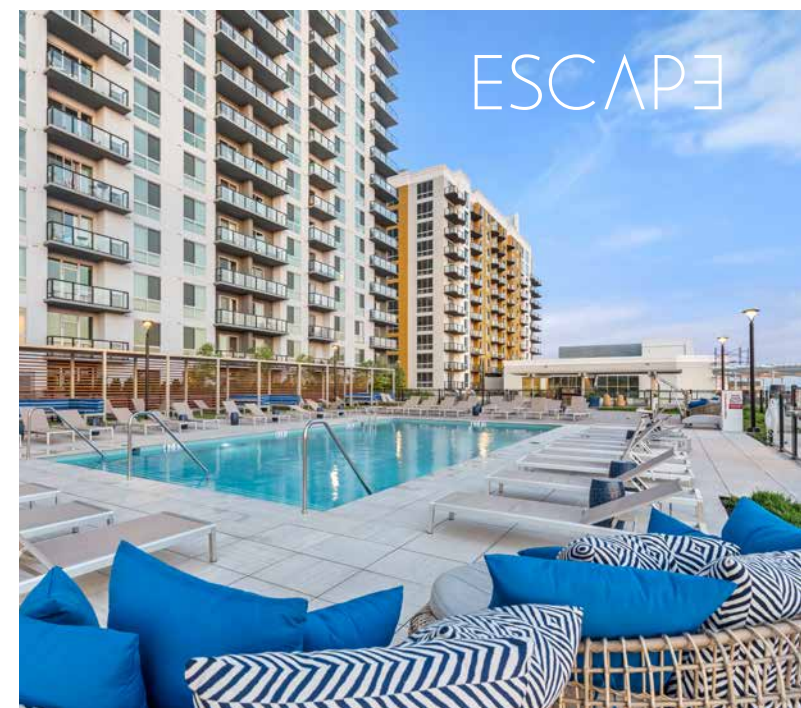
Opus, Anthem, Allure, Beacon, Escape, and NV Apartments offer Studio, 1, 2, 3, and 4 Bedroom apartments, flexible lease terms with furnished or non-furnished options, all complemented by resort-style amenities and ample outdoor space.

For more information :

203.961.5000

[Leasing@BLTLiveWorkPlay.com](mailto:Leasing@BLTLiveWorkPlay.com)

Visit [BLTLiveWorkPlay.com](https://BLTLiveWorkPlay.com) for availability







# PREFERRED EMPLOYER PROGRAM

As a partner in the Preferred Employer Program, your employees can take advantage of exclusive perks, including discounts throughout Harbor Point. For more information, please contact our corporate leasing representative below.

For more information :  
203.961.5000  
[Leasing@BLTLiveWorkPlay.com](mailto:Leasing@BLTLiveWorkPlay.com)

Visit [BLTLiveWorkPlay.com](https://www.bltliverworkplay.com) for more information.

# CORPORATE REBATE PROGRAM

Your home at every stage! With a partnership between BLT and William Pitt-Julia B. Fee Sotheby's International Realty, you always find your home with us. For more information, please contact our corporate leasing representative below.

For more information :

**Jane Mcwilliams**

VP Business Development & Relocation  
973.650.2445  
[jmcwilliams@williampitt.com](mailto:jmcwilliams@williampitt.com)

For more information visit: [williampitt.com/fairfield](https://www.williampitt.com/fairfield)





# BLT LiveWorkPlay

Please direct all inquiries to

**Leslie Whatley**  
Executive Vice President

203 644 1577  
[lwhatley@bltoffice.com](mailto:lwhatley@bltoffice.com)

**Drew Steinberg**  
Leasing Manager

203 355 6057  
[dsteinberg@bltoffice.com](mailto:dsteinberg@bltoffice.com)