

# 20 GLOVER AVENUE







# LIVE, WORK & PLAY

Building and Land Technology strives to create vibrant and thriving communities. As a vertically integrated developer with an entrepreneurial spirit, BLT enhances and connects your experiences as you live, work, and play within our communities.

For more information :

**Leslie Whatley**

Executive Vice President

203 644 1577

[lwhatley@bltooffice.com](mailto:lwhatley@bltooffice.com)

---

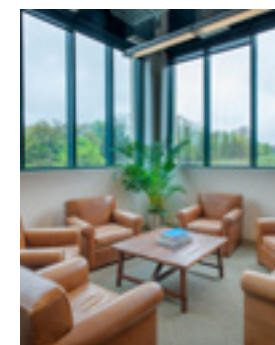
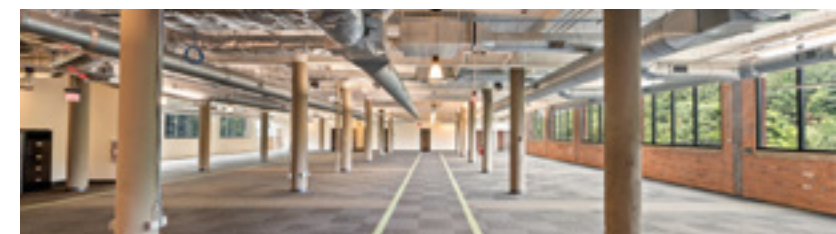
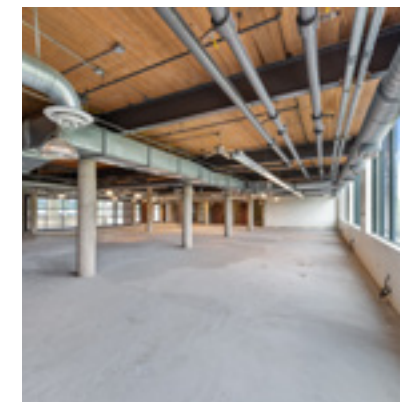
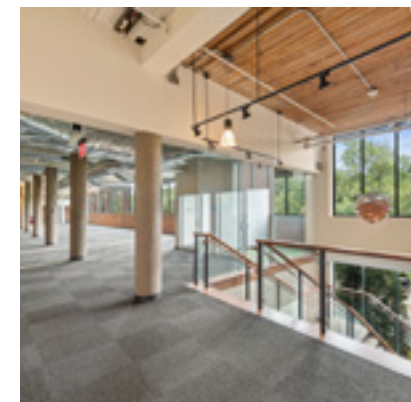
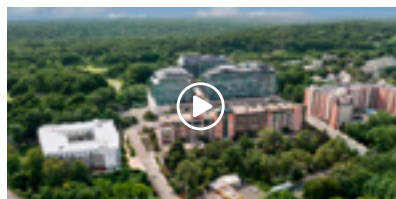
**BLT**LiveWorkPlay.com



# PRIME COMMERCIAL SPACES AVAILABLE

- Built spaces available
- Walking distance to the Merritt 7 train station
- Accessible to Route 7, CT-15, and I-95.
- Full-service cafeteria
- Merritt River views and activated outdoor space
- Security on site
- Located within a developing Live-Work-Play community
- Class-A property management

Click image below to view video.

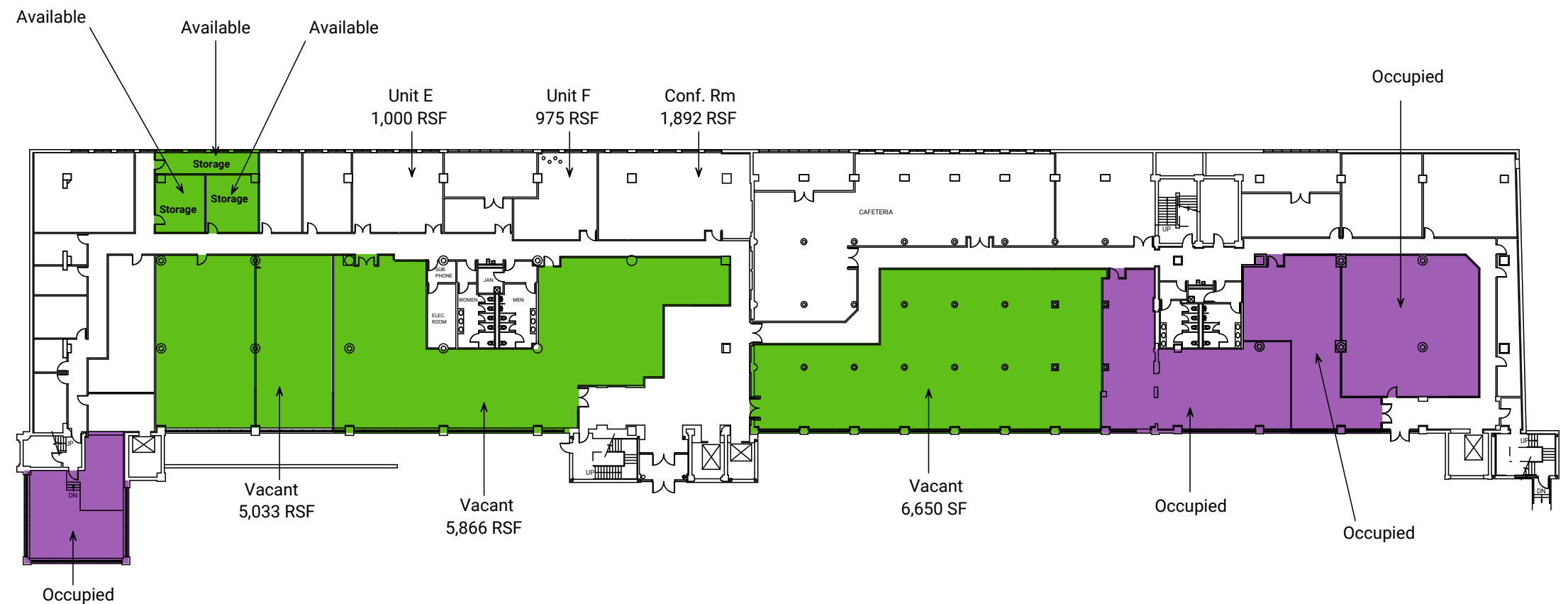


NORTH SEVEN, NORWALK



# 20 GLOVER AVENUE

## 1<sup>ST</sup> FLOOR



SUITE 1S-A

---

**5,033<sub>SF</sub>**

SUITE 1S-B

---

**5,866<sub>SF</sub>**

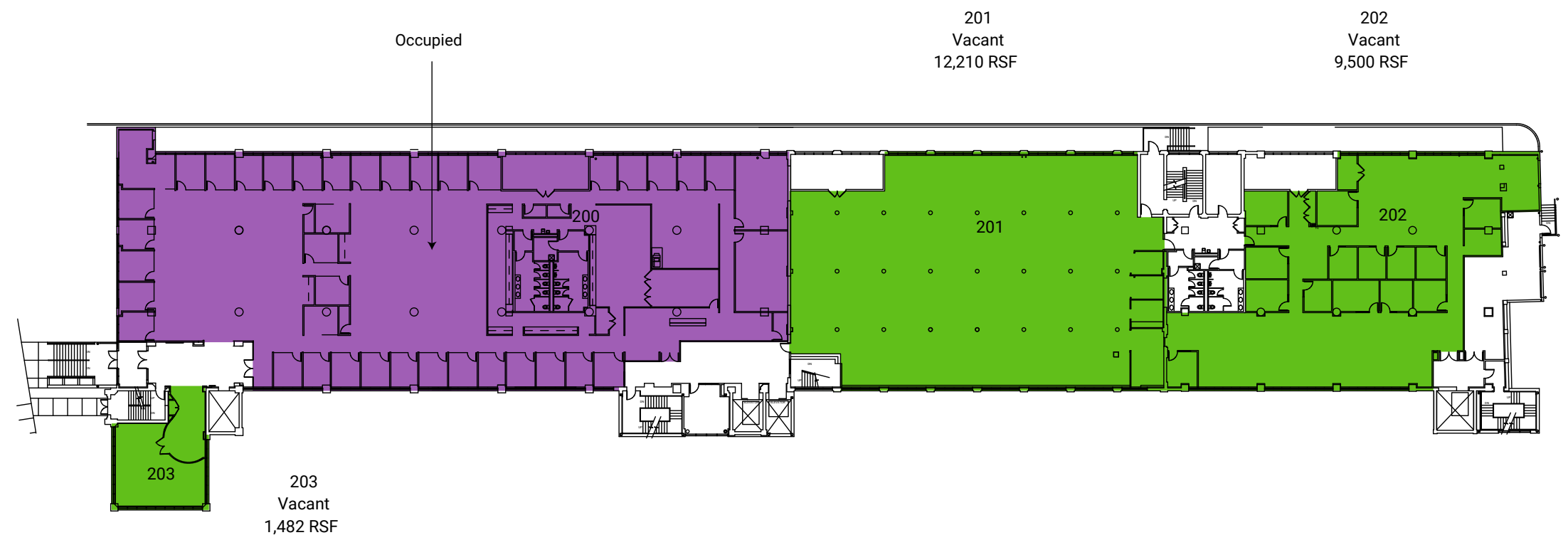
SUITE 1C

---

**6,650<sub>SF</sub>**

# 20 GLOVER AVENUE

## 2<sup>ND</sup> FLOOR

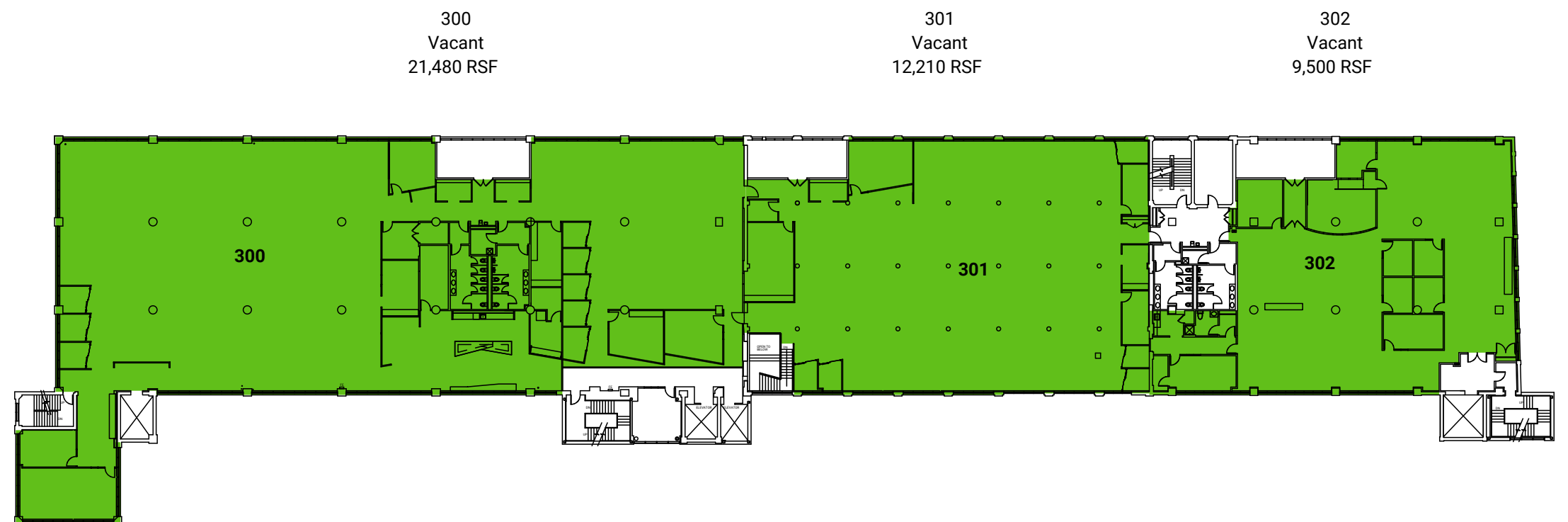


SUITE 2S	SUITE 2C	SUITE 2N
1,482 <sub>SF</sub>	12,210 <sub>SF</sub>	9,500 <sub>SF</sub>

# 20 GLOVER AVENUE

## 3<sup>RD</sup> FLOOR

NORTH SEVEN, NORWALK



SUITE 3S  
**21,480<sub>SF</sub>**

SUITE 3C  
**12,210<sub>SF</sub>**

SUITE 3N  
**9,500<sub>SF</sub>**

[VIEW TOUR](#)

# 20 GLOVER AVENUE

4<sup>TH</sup> FLOOR



SUITE 4C  

---

10,527<sub>SF</sub>

# 20 GLOVER AVENUE

## 5<sup>TH</sup> FLOOR



SUITE 5S  
**25,250<sub>SF</sub>**

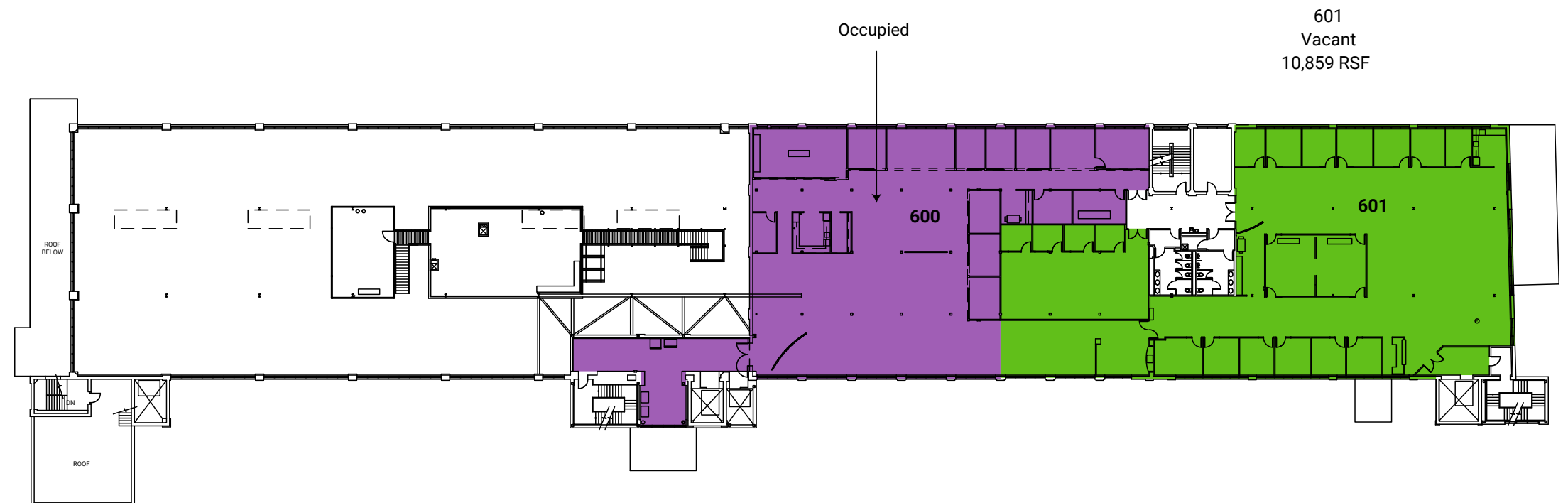
SUITE 5C  
**9,972<sub>SF</sub>**

[VIEW TOUR](#)



# 20 GLOVER AVENUE

## 6<sup>TH</sup> FLOOR



SUITE 6N  

---

10,859<sub>SF</sub>



# THE NEIGHBORHOOD

Perfectly located within 20 minutes to Harbor Point and immediate access to the Merritt Parkway, Route 7, and MetroNorth Train Station to take you to NYC.

You can find parks and over 30 miles of trails in this urban oasis



NORTH SEVEN, NORWALK



# 20 GLOVER AVENUE

GLOVER  
APARTMENTS

LESS THAN 10 MINUTES TO  
THE SONO  
COLLECTION  
AND 

LGA, JFK & WESTCHESTER COUNTY AIRPORTS  
LESS THAN ONE HOUR DRIVE  
TO NEW YORK CITY

MERRITT  
PARKWAY

 MERRITT 7  
METRO NORTH

FUTURE  
RESIDENTIAL  
DEVELOPMENT

ROUTE  


the  
curb  
apartments

RETAIL, RESTAURANTS  
& SERVICES

N O R T H

S E V E N





the **curb**  
apartments

# FIND YOURSELF AT HOME & LIVE STEPS AWAY FROM WHERE YOU WORK!

The Curb Apartments , and One Glover Apartments offer Studio, 1, and 2 Bedroom apartments, flexible lease terms with furnished or non-furnished options, all complemented by resort-style amenities and ample outdoor space.



**GLOVER**  
APARTMENTS

Visit [BLTLiveWorkPlay.com](https://www.bltliveworkplay.com) for availability



# CORPORATE REBATE PROGRAM

Your home at every stage! With a partnership between BLT and William Pitt-Julia B. Fee Sotheby's International Realty, you always find your home with us. For more information, please contact our corporate leasing representative below.

**JANE MCWILLIAMS**

VP Business Development & Relocation

973.650.2445

[jmcwilliams@williampitt.com](mailto:jmcwilliams@williampitt.com)

For more information visit: [williampitt.com/fairfield](https://williampitt.com/fairfield)



## PREFERRED EMPLOYER PROGRAM

As a partner in the Preferred Employer Program, your employees can take advantage of exclusive perks, including discounts throughout Harbor Point. For more information, please contact our corporate leasing representative below.

**Charissa Endsley**

Residential Portfolio Director

203.355.6057

[cendsley@bltoffice.com](mailto:cendsley@bltoffice.com)

Visit [BLTLiveWorkPlay.com](https://BLTLiveWorkPlay.com) for more information.



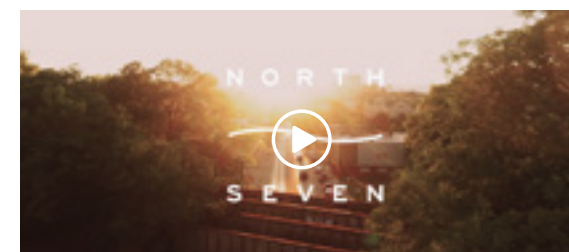




# FIND YOUR TRUE NORTH 7

North Seven is a vibrant community designed with the intent to truly embody the concept of LIVE, WORK & PLAY. North Seven is for those who want a little bit of everything in their lives, whether it's shopping, hiking, working, celebrating, or relaxing. You will experience an elevated quality of life all in one place. Everything is within your grasp.

SEE NORTH SEVEN IN ACTION!



To learn more about North Seven visit: [north-seven.com](https://north-seven.com)

NORTH SEVEN, NORWALK



# BLT LiveWorkPlay

Please direct all inquiries to

**Leslie Whatley**  
Executive Vice President

203 644 1577  
[lwhatley@bltoffice.com](mailto:lwhatley@bltoffice.com)

**Drew Steinberg**  
Leasing Manager

203 355 6057  
[dsteinberg@bltoffice.com](mailto:dsteinberg@bltoffice.com)