

MERRITT ON THE RIVER

20 GLOVER AVENUE





# LIVE, WORK & PLAY

Building and Land Technology strives to create vibrant and thriving communities for our partners. As a vertically integrated developer with an entrepreneurial spirit, BLT enhances and connects your experiences as you live, work, and play within our communities.

For more information :

**Denise Denson**

Vice President of Commercial Leasing

203 664 1577

[ddenson@bltoffice.com](mailto:ddenson@bltoffice.com)



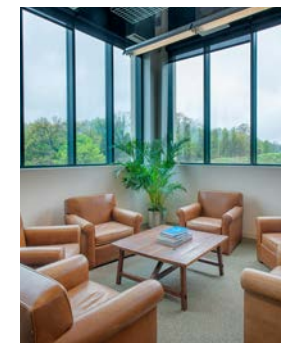
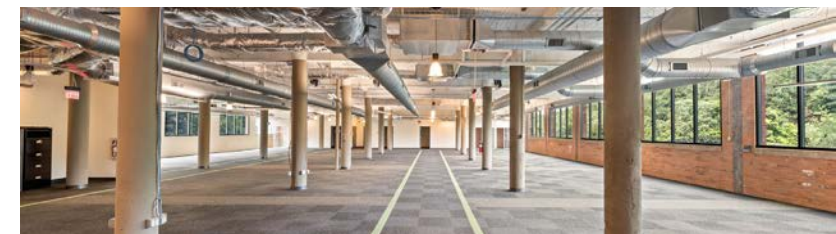
# PRIME COMMERCIAL SPACE AVAILABLE

- Built spaces available
- Walking distance to the Merritt 7 train station
- Accessible to Route 7, CT-15, and I-95.
- Full-service cafeteria
- Merritt River views and activated outdoor space
- Security on site
- Located within a developing Live-Work-Play community
- Class-A property management

*Click image below to view video.*



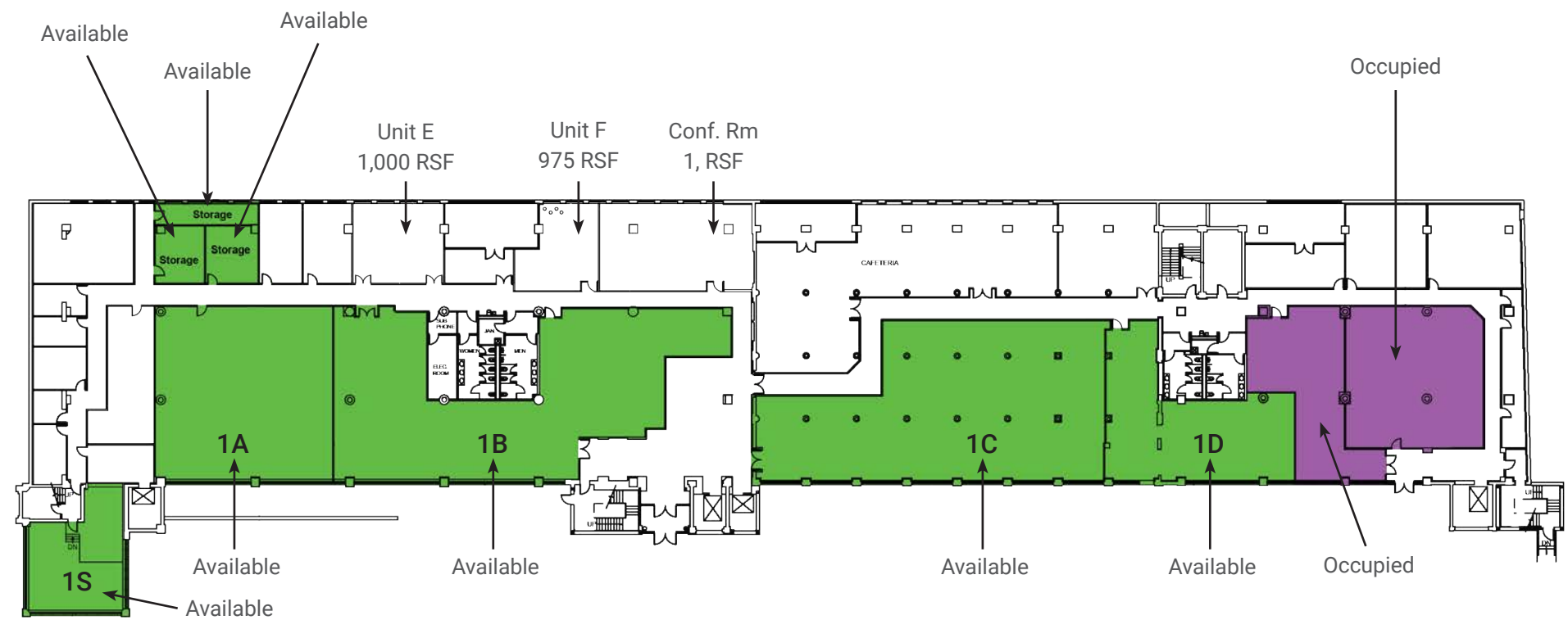
20 GLOVER AVENUE / NORTH SEVEN / NORWALK, CT





# 20 GLOVER AVENUE

## 1<sup>ST</sup> FLOOR



SUITE 1S	SUITE 1A	SUITE 1B
1,482 <sub>SF</sub>	5,033 <sub>SF</sub>	5,866 <sub>SF</sub>
SUITE 1C	SUITE 1D	
6,650 <sub>SF</sub>	2,150 <sub>SF</sub>	

# 20 GLOVER AVENUE

## 2<sup>ND</sup> FLOOR



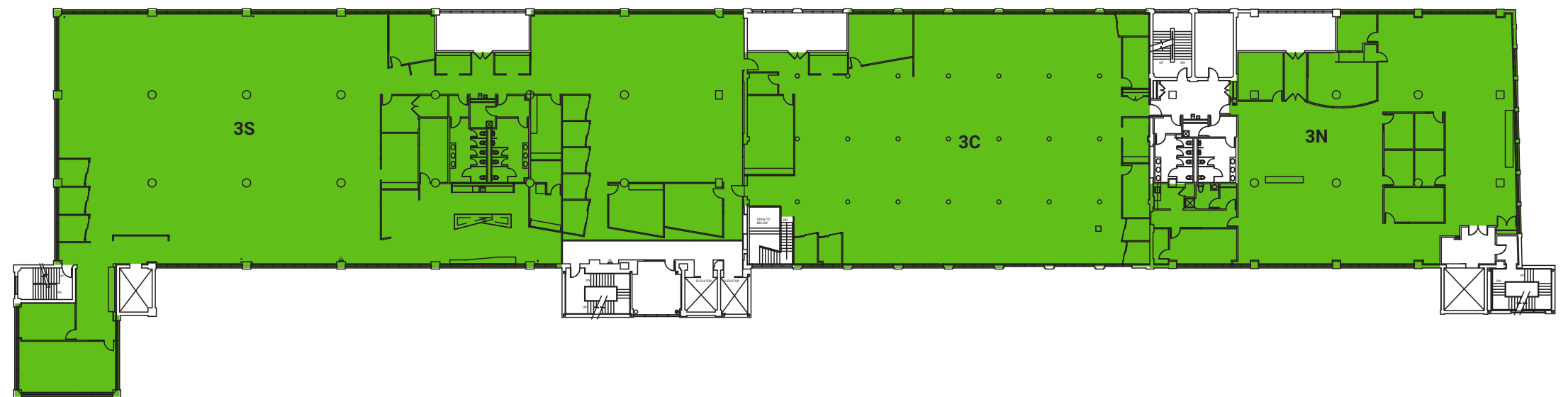
SUITE 2S  
**1,482<sub>SF</sub>**

SUITE 2C  
**12,210<sub>SF</sub>**

SUITE 2N  
**9,500<sub>SF</sub>**

# 20 GLOVER AVENUE

## 3<sup>RD</sup> FLOOR



SUITE 3S

**21,480<sub>SF</sub>**

SUITE 3C

**12,210<sub>SF</sub>**

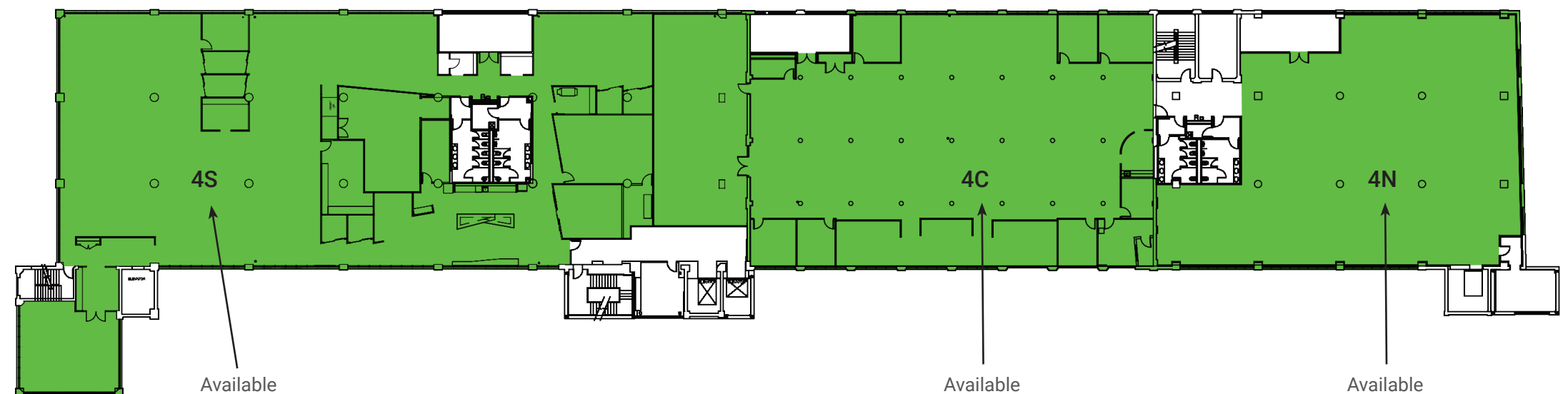
SUITE 3N

**9,500<sub>SF</sub>**

[VIEW TOUR](#)

# 20 GLOVER AVENUE

## 4<sup>TH</sup> FLOOR



SUITE 4S  
**23,163<sub>SF</sub>**

SUITE 4C  
**10,527<sub>SF</sub>**

SUITE 4N  
**9,000<sub>SF</sub>**

# 20 GLOVER AVENUE

## 5<sup>TH</sup> FLOOR



SUITE 5S  
**25,250<sub>SF</sub>**

SUITE 5C  
**9,972<sub>SF</sub>**

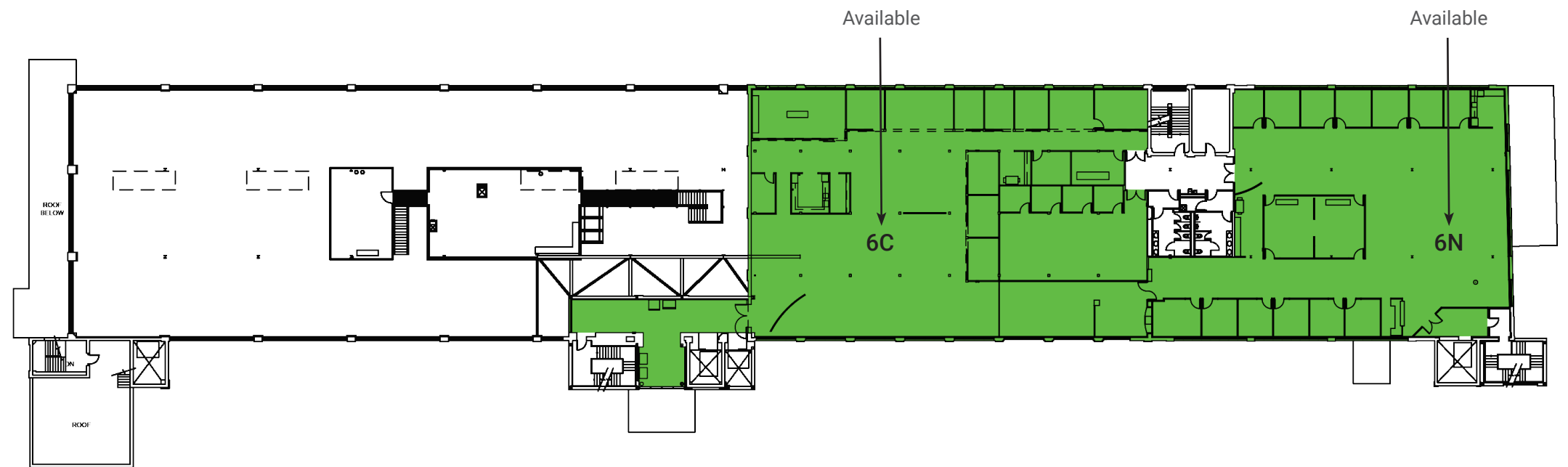
SUITE 5N  
**11,738<sub>SF</sub>**

[VIEW TOUR](#)



# 20 GLOVER AVENUE

## 6<sup>TH</sup> FLOOR



SUITE 6C  

---

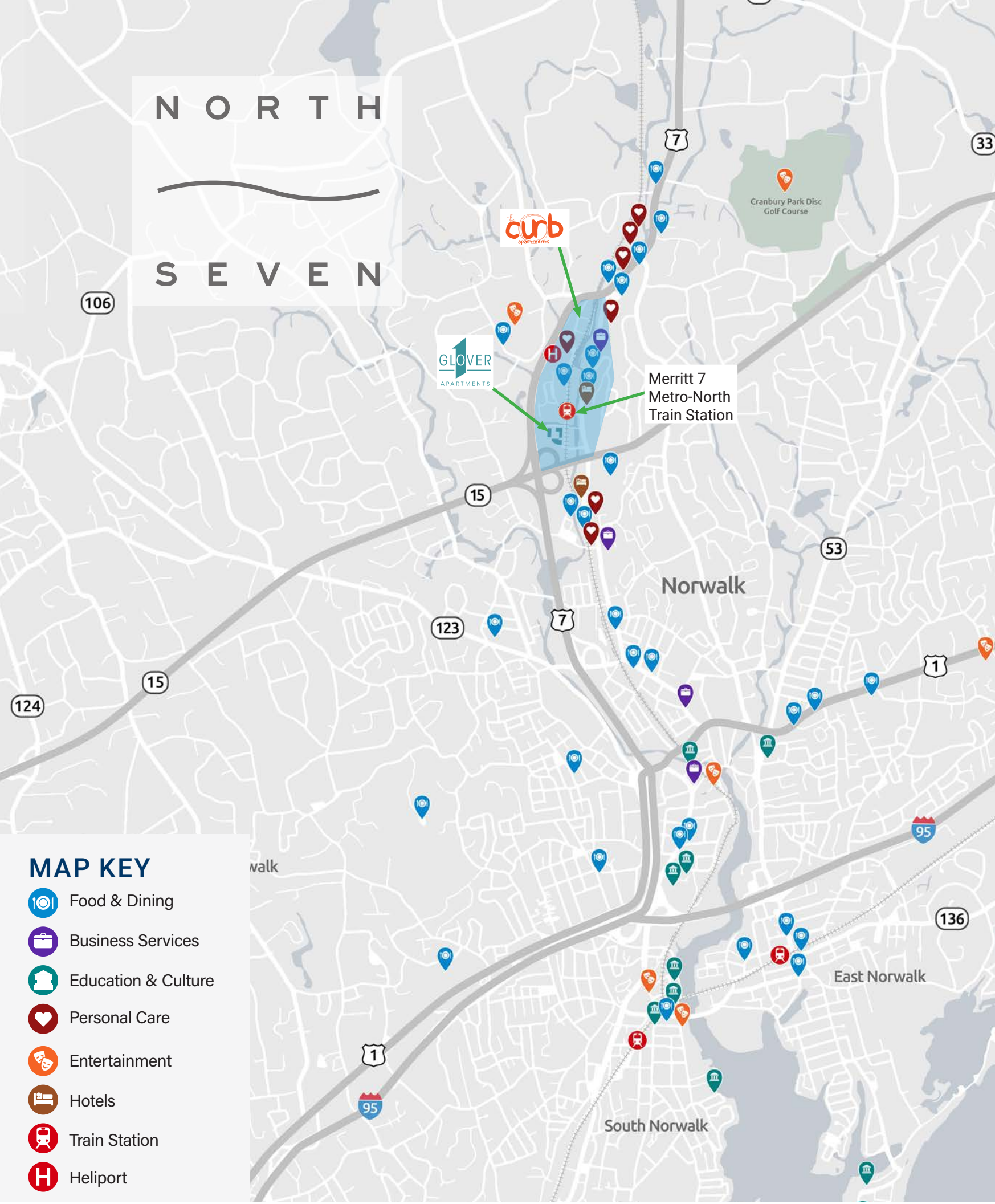
11,234<sub>SF</sub>

SUITE 6N  

---

10,859<sub>SF</sub>





# EXPLORE NORTH SEVEN

Perfectly located within 20 minutes to Harbor Point and immediate access to the Merritt Parkway, Route 7, and MetroNorth Train Station to take you to NYC.

You can find parks and over 30 miles of trails in this urban oasis

New dedicated train station





**20 GLOVER AVENUE**

Hotel Zero Degrees

LESS THAN 10 MINUTES TO  
THE **SONO**  
COLLECTION  
AND 

LGA, JFK & WESTCHESTER COUNTY AIRPORTS  
LESS THAN ONE HOUR DRIVE  
TO NEW YORK CITY

SHOP  
L WINE

WildKie

GLOVER  
APARTMENTS

*Siena*  
RISTORANTE ITALIANO

10 & 20  
GLOVER AVENUE

MERRITT ON  
THE RIVER  
APARTMENTS



**The Towers**

MERRITT  
CORPORATE  
PARK

EVEN HOTEL


 MERRITT 7  
METRO-NORTH

NORTH  
SEVEN  
DEVELOPMENT

 FUTURE NORWALK  
RIVER VALLEY TRAIL

RETAIL, RESTAURANTS  
& SERVICES

DUNKIN'  
DONUTS

 FUTURE NORWALK  
VALLEY RIVER TRAIL  
EXTENSION

ROUTE  


SILVERMINE  
GOLF CLUB

COURTYARD  
BY MARRIOTT

*the* curb  
apartments

 OAK+ALMOND

N O R T H

S E V E N





# FIND YOURSELF AT HOME & LIVE STEPS AWAY FROM WHERE YOU WORK!



The Curb Apartments , and One Glover Apartments offer Studio, 1, and 2 Bedroom apartments, flexible lease terms with furnished or non-furnished options, all complemented by resort-style amenities and ample outdoor space.

For more information :

(203) 855-1500

[Leasing@north-seven.com](mailto:Leasing@north-seven.com)

Visit [BLTLiveWorkPlay.com](https://BLTLiveWorkPlay.com) for availability



# CORPORATE REBATE PROGRAM

Your home at every stage! With a partnership between BLT and William Pitt-Julia B. Fee Sotheby's International Realty, you always find your home with us. For more information, please contact our corporate leasing representative below.

For more information :

**JANE MCWILLIAMS**

VP Business Development & Relocation

973.650.2445

[jmcwilliams@williampitt.com](mailto:jmcwilliams@williampitt.com)

For more information visit: [williampitt.com/fairfield](https://williampitt.com/fairfield)



# PREFERRED EMPLOYER PROGRAM

As a partner in the Preferred Employer Program, your employees can take advantage of exclusive perks, including discounts throughout Harbor Point. For more information, please contact our corporate leasing representative below.

For more information :

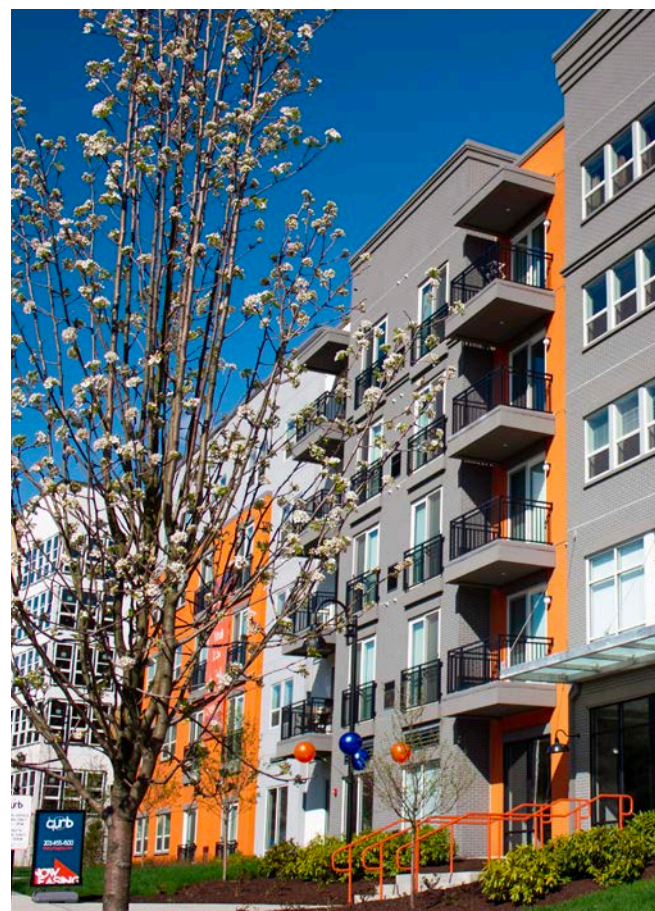
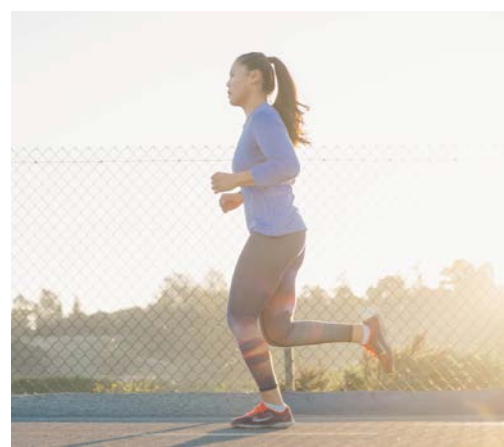
203.961.5000

[Leasing@BLTLiveWorkPlay.com](mailto:Leasing@BLTLiveWorkPlay.com)

Visit [BLTLiveWorkPlay.com](https://BLTLiveWorkPlay.com) for more information.





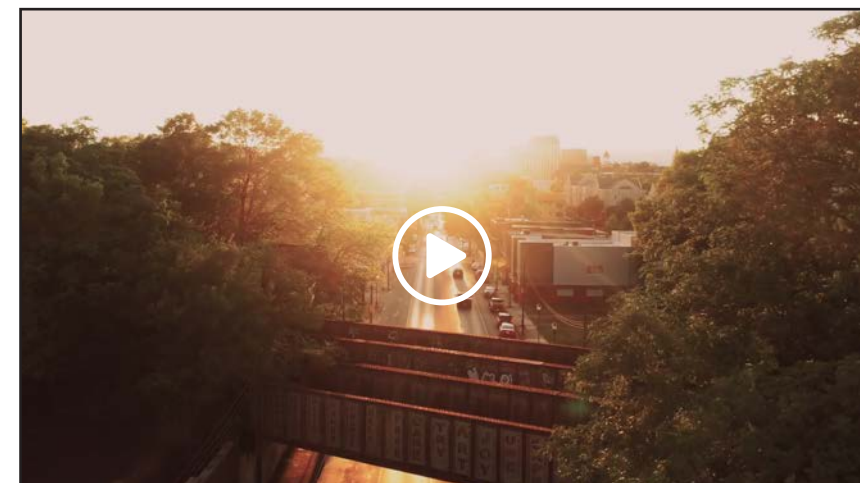


# FIND YOUR TRUE NORTH 7

North Seven is a vibrant community designed with the intent to truly embody the concept of LIVE, WORK & PLAY. North Seven is for those who want a little bit of everything in their lives, whether it's shopping, hiking, working, celebrating, or relaxing. You will experience an elevated quality of life all in one place. Everything is within your grasp.

To learn more about North Seven visit: [north-seven.com](http://north-seven.com)

SEE NORTH SEVEN IN ACTION!





# BLT LiveWorkPlay

Please direct all inquiries to

**Denise Denson**  
Vice President of Commercial Leasing

203 664 1577  
[ddenson@bltooffice.com](mailto:ddenson@bltooffice.com)

**Drew Steinberg**  
Commercial Leasing Manager

203 355 6057  
[dsteinberg@bltooffice.com](mailto:dsteinberg@bltooffice.com)