

MERRITT ON THE RIVER

# 20 GLOVER AVENUE





# LIVE, WORK & PLAY

Building and Land Technology strives to create vibrant and thriving communities for our partners. As a vertically integrated developer with an entrepreneurial spirit, BLT enhances and connects your experiences as you live, work, and play within our communities.

For more information :

**Leslie Whatley**

Executive Vice President

203 644 1577

[lwhatley@bltoffice.com](mailto:lwhatley@bltoffice.com)

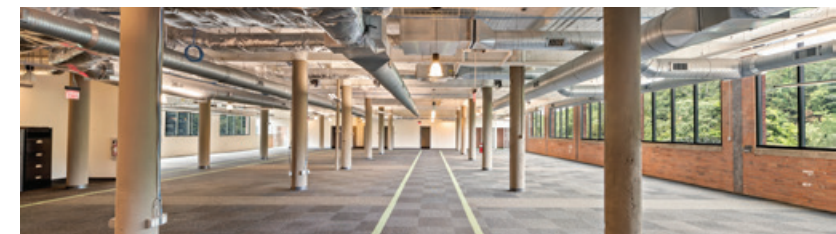
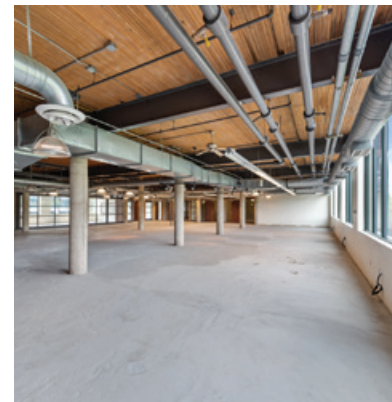
# PRIME COMMERCIAL SPACE AVAILABLE

- Built spaces available
- Walking distance to the Merritt 7 train station
- Accessible to Route 7, CT-15, and I-95.
- Full-service cafeteria
- Merritt River views and activated outdoor space
- Security on site
- Located within a developing Live-Work-Play community
- Class-A property management

Click image below to view video.

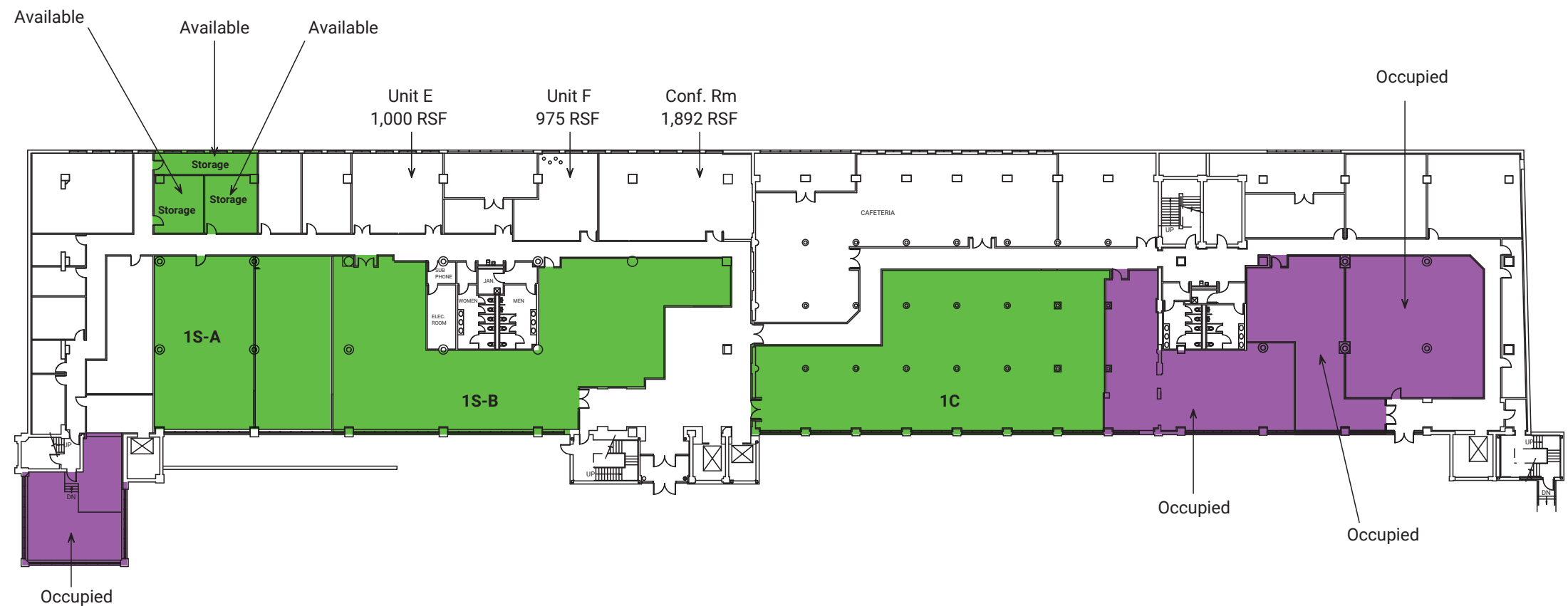


20 GLOVER AVENUE / NORTH SEVEN / NORWALK, CT



# 20 GLOVER AVENUE

## 1<sup>ST</sup> FLOOR



SUITE 1S-A  
**5,033<sub>SF</sub>**

SUITE 1S-B  
**5,866<sub>SF</sub>**

SUITE 1C  
**6,650<sub>SF</sub>**

# 20 GLOVER AVENUE

## 2<sup>ND</sup> FLOOR



SUITE 2S

**1,482<sub>SF</sub>**

SUITE 2C

**12,210<sub>SF</sub>**

SUITE 2N

**9,500<sub>SF</sub>**

# 20 GLOVER AVENUE

## 3<sup>RD</sup> FLOOR



SUITE 3S

**21,480<sub>SF</sub>**

[VIEW TOUR](#)

SUITE 3C

**12,210<sub>SF</sub>**

SUITE 3N

**9,500<sub>SF</sub>**

# 20 GLOVER AVENUE

## 4<sup>TH</sup> FLOOR



SUITE 4C  

---

10,527<sub>SF</sub>

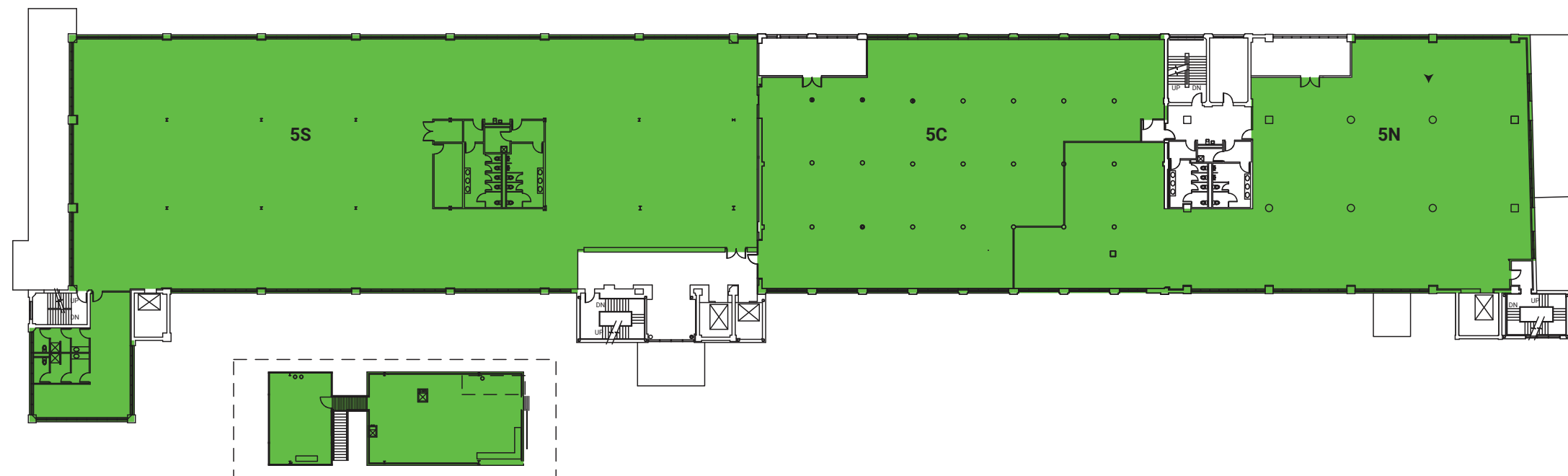
SUITE 4N  

---

9,000<sub>SF</sub>

# 20 GLOVER AVENUE

## 5<sup>TH</sup> FLOOR



5th Floor Mezz  
3,800 RSF

SUITE 5S

**25,250<sub>SF</sub>**

[VIEW TOUR](#)

SUITE 5C

**9,972<sub>SF</sub>**

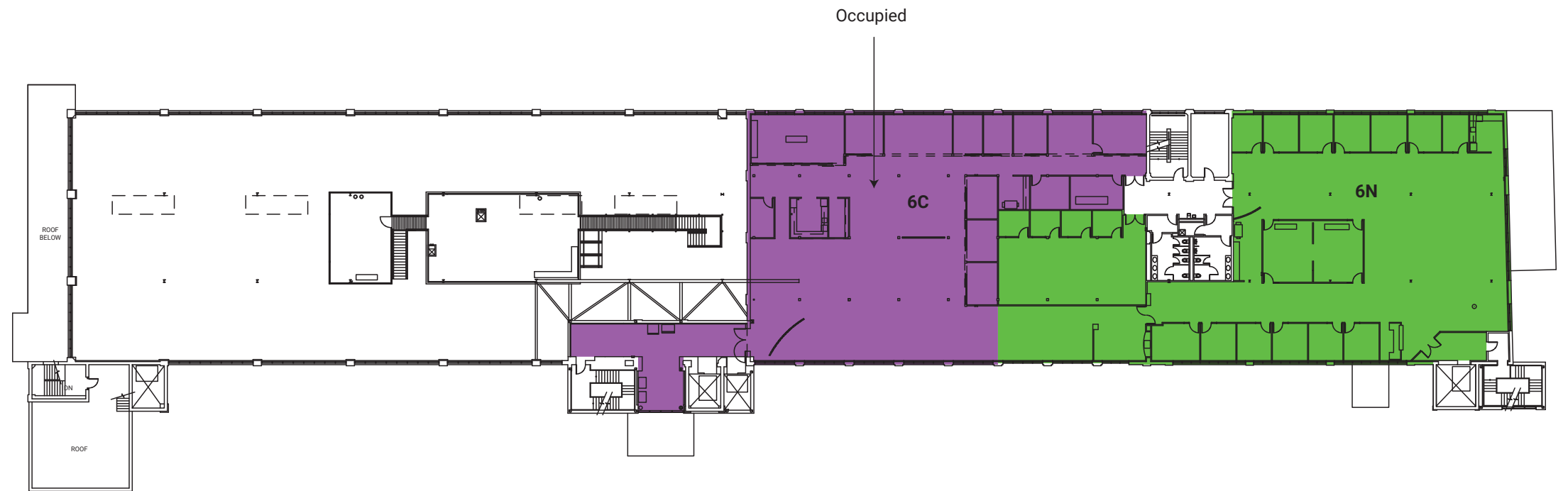
SUITE 5N

**11,738<sub>SF</sub>**



# 20 GLOVER AVENUE

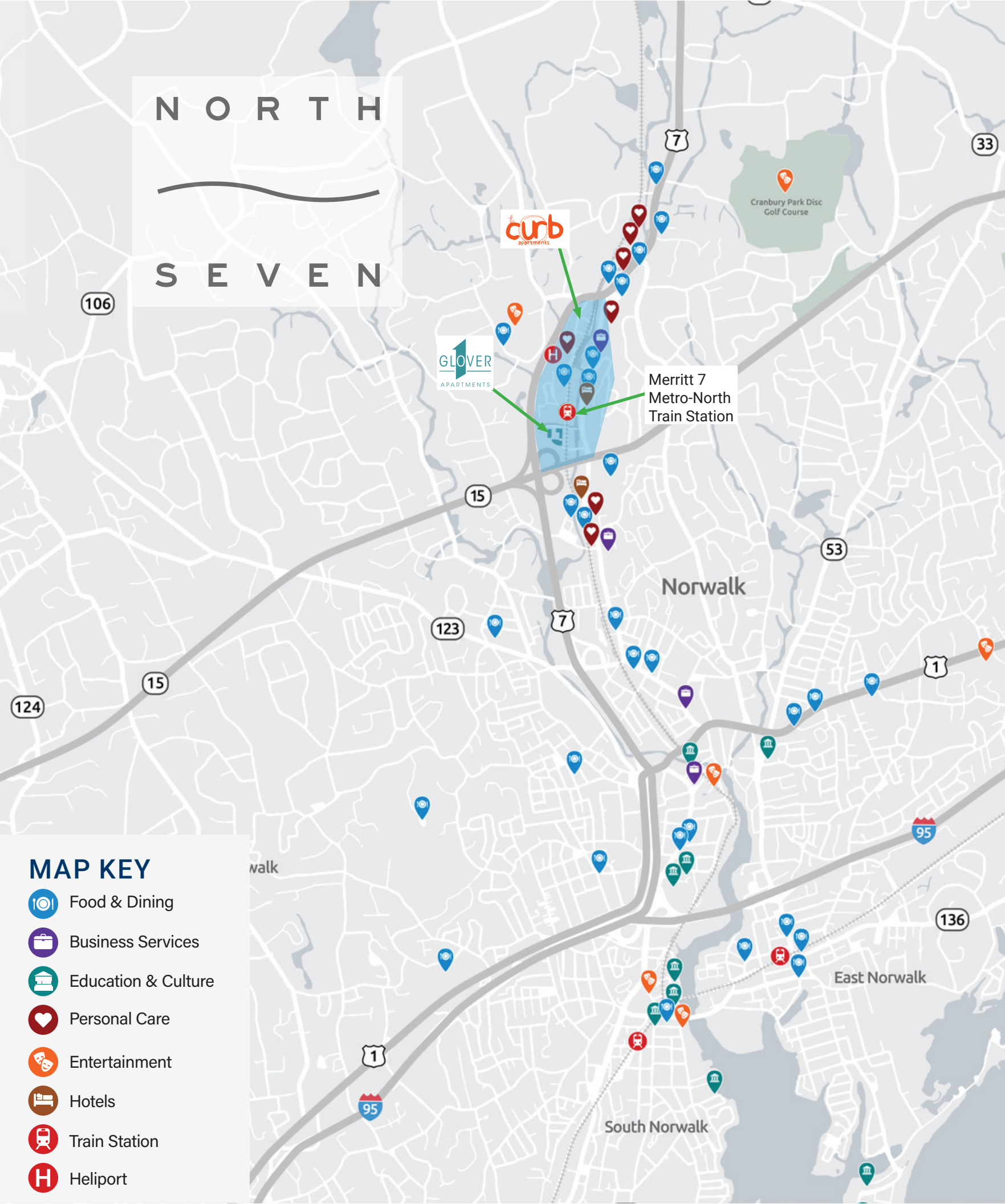
## 6<sup>TH</sup> FLOOR



SUITE 6N  

---

10,859<sub>SF</sub>



# EXPLORE NORTH SEVEN

Perfectly located within 20 minutes to Harbor Point and immediate access to the Merritt Parkway, Route 7, and MetroNorth Train Station to take you to NYC.

You can find parks and over 30 miles of trails in this urban oasis

New dedicated train station, fall 2022



NORTH SEVEN, NORWALK

# 20 GLOVER AVENUE

GLOVER APARTMENTS

LESS THAN 10 MINUTES TO THE SONO COLLECTION AND 

LGA, JFK & WESTCHESTER COUNTY AIRPORTS LESS THAN ONE HOUR DRIVE TO NEW YORK CITY

MERRITT PARKWAY

MERRITT 7 METRO NORTH

FUTURE RESIDENTIAL DEVELOPMENT

ROUTE 

the curb apartments

RETAIL, RESTAURANTS & SERVICES

N O R T H

S E V E N



# FIND YOURSELF AT HOME & LIVE STEPS AWAY FROM WHERE YOU WORK!

The Curb Apartments , and One Glover Apartments offer Studio, 1, and 2 Bedroom apartments, flexible lease terms with furnished or non-furnished options, all complemented by resort-style amenities and ample outdoor space.

For more information :

(203) 855-1500

[Leasing@north-seven.com](mailto:Leasing@north-seven.com)



Visit [BLTLiveWorkPlay.com](http://BLTLiveWorkPlay.com) for availability

# CORPORATE REBATE PROGRAM

Your home at every stage! With a partnership between BLT and William Pitt-Julia B. Fee Sotheby's International Realty, you always find your home with us. For more information, please contact our corporate leasing representative below.

For more information :

**JANE MCWILLIAMS**

VP Business Development & Relocation

973.650.2445

[jmcwilliams@williampitt.com](mailto:jmcwilliams@williampitt.com)

For more information vist: [williampitt.com/fairfield](http://williampitt.com/fairfield)



# PREFERRED EMPLOYER PROGRAM

As a partner in the Preferred Employer Program, your employees can take advantage of exclusive perks, including discounts throughout Harbor Point. For more information, please contact our corporate leasing representative below.

For more information :

203.961.5000

[Leasing@BLTLiveWorkPlay.com](mailto:Leasing@BLTLiveWorkPlay.com)

Visit [BLTLiveWorkPlay.com](http://BLTLiveWorkPlay.com) for more information.





# FIND YOUR TRUE NORTH 7



North Seven is a vibrant community designed with the intent to truly embody the concept of LIVE, WORK & PLAY. North Seven is for those who want a little bit of everything in their lives, whether it's shopping, hiking, working, celebrating, or relaxing. You will experience an elevated quality of life all in one place. Everything is within your grasp.

To learn more about North Seven visit: [north-seven.com](http://north-seven.com)



SEE NORTH SEVEN IN ACTION!



# **BLT** LiveWorkPlay

Please direct all inquiries to

**Leslie Whatley**  
Executive Vice President

203 644 1577  
[lwhatley@bltoffice.com](mailto:lwhatley@bltoffice.com)

**Drew Steinberg**  
Leasing Manager

203 355 6057  
[dsteinberg@bltoffice.com](mailto:dsteinberg@bltoffice.com)