

BLT LiveWorkPlay

# 801 MAIN AVENUE

Your Logo



# LIVE, WORK & PLAY

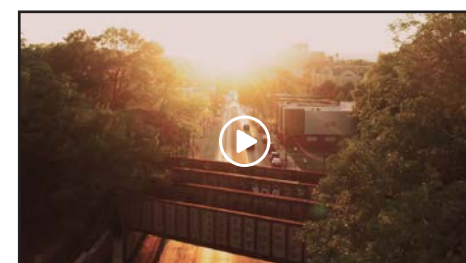
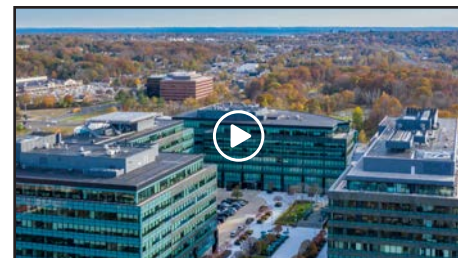


North Seven is a vibrant community that truly embodies the concept of LIVE, WORK & PLAY. Designed for those who want a little bit of everything in their lives, whether it's shopping, hiking, working, celebrating, and relaxing, North Seven offers an elevated quality of life all in one place, with everything within reach.

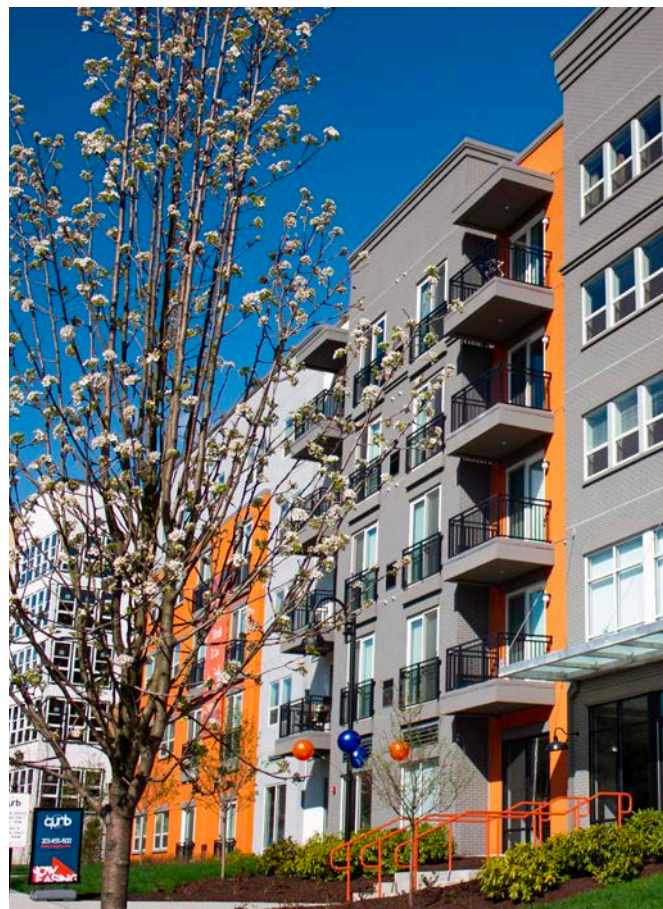
Building and Land Technology strives to create vibrant and thriving communities for our partners. As a vertically integrated developer with an entrepreneurial spirit, BLT enhances and connects your experiences as you live, work, and play within our communities.

To learn more about North Seven visit: [north-seven.com](http://north-seven.com)

SEE THE TOWERS AND NORTH SEVEN IN ACTION!



Check out our channels!





Hotel Zero Degrees

STOP & SHOP & TOTAL WINE

LESS THAN 10 MINUTES TO THE SONO COLLECTION AND I-95

LGA, JFK & WESTCHESTER COUNTY AIRPORTS LESS THAN ONE HOUR DRIVE TO NEW YORK CITY



10 & 20 GLOVER AVENUE

GLOVER APARTMENTS

THE TOWERS

MERRITT CORPORATE PARK

MERRITT ON THE RIVER APARTMENTS

EVEN HOTEL

MERRITT 7 METRO-NORTH

NORTH SEVEN DEVELOPMENT

FUTURE NORWALK RIVER VALLEY TRAIL

RETAIL, RESTAURANTS & SERVICES

FUTURE NORWALK VALLEY RIVER TRAIL EXTENSION

ROUTE 7

SILVERMINE GOLF CLUB

COURTYARD BY MARRIOTT

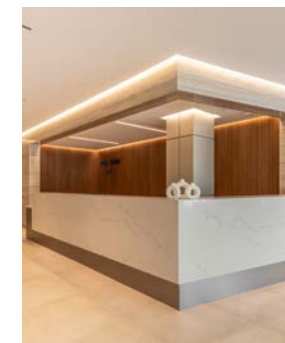
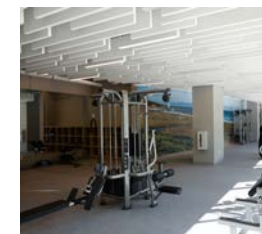
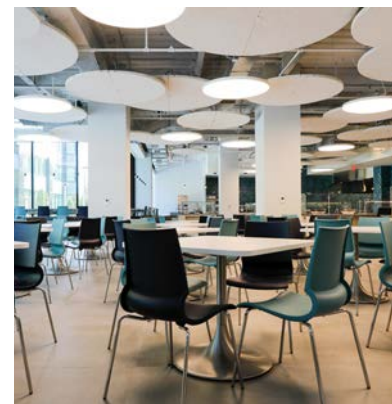
the curb apartments

# PRIME COMMERCIAL SPACE AVAILABLE

- Located within a developing Live-Work-Play community
- Walking distance to the Merritt 7 train station
- Built spaces available
- Outstanding views
- Access to Norwalk River Valley Trail
- EV Chargers
- Accessible to Route 7, CT-15, and I-95
- Class-A property management
- Security on site
- Covered and secure parking
- Robust technology infrastructure
- Flexible floor plates for diverse requirements



*Click image to view video.*



# UNLIMITED ACCESS



## HELICOPTER

One of A Kind Fully Operational Rooftop Pad Location

Seamless Executive Travel

Within 30 Minutes of Major Airports



## TRAIN

Immediate Proximity to New Merritt 7 Station

Seamless Access for Daily Commuting

Direct Access to Grand Central Station and Fairfield County Locations



## NORWALK TRANSIT

Direct Access to Norwalk's Public Transit Network

Two Norwalk Bus Stops on Property

Access to Point of Interest Locations



## CAR

Route 7 and Merritt Parkway Access

Less Than 5 Minutes From I-95

Less Than 1 Hour from New York City

On-site Covered Parking Available at 3 per 1,000 sq ft



## BICYCLE

Access for Environmentally Conscious Community

Storage Available Within the Garage

Bike Paths on the NRVT are Located Minutes from the Property



## WALKING

.3 Mile Walk to the Merritt 7 Station

Half-Mile Proximity to Retail, Dining, and Entertainment

Nestled Within the Dynamic North 7 Live-Work-Play Ecosystem

The NRVT is Just Minutes from the Property

# UNMATCHED AMENITIES

- Activated Courtyard with Work and Community Space
- High Performance Fitness Center
- Resort Quality Locker Rooms and Showers
- Multi-Purpose Conference Centers
- Locally Sourced Food Hall
- Food Hall Hanger Doors with Indoor Outdoor Dining
- Helicopter Pad
- Zen Garden

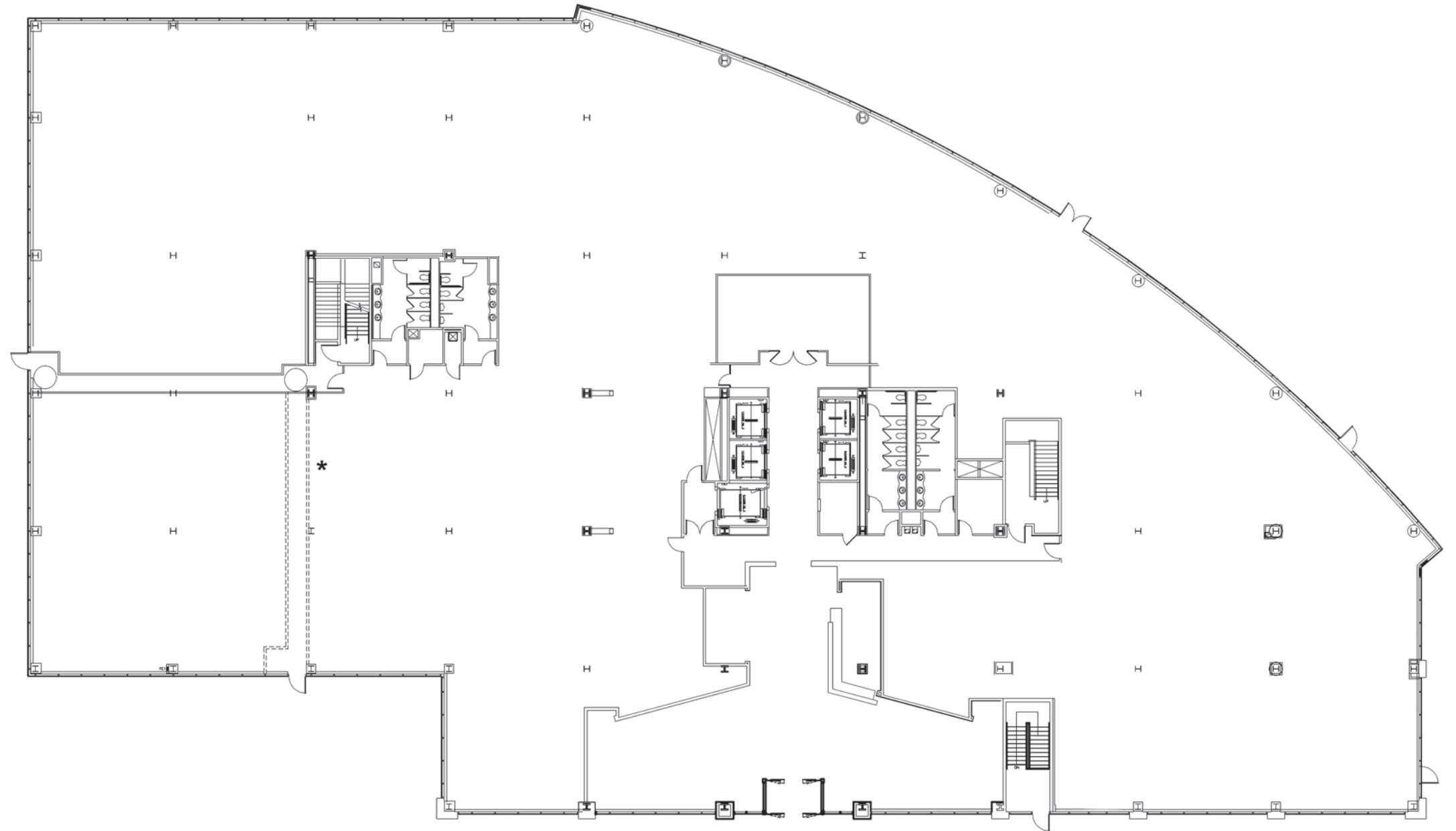
# UNPARALLELED PROGRAMS

- Weekly Free Fitness Classes
- Seasonal Pop-Ups and Food Trucks
- Daily Diverse Dining Options
- Seamless Access to the Norwalk River Valley Trail
- Seasonal Farmers Markets



# 801 MAIN AVENUE

1<sup>ST</sup> FLOOR  
39,691 RSF



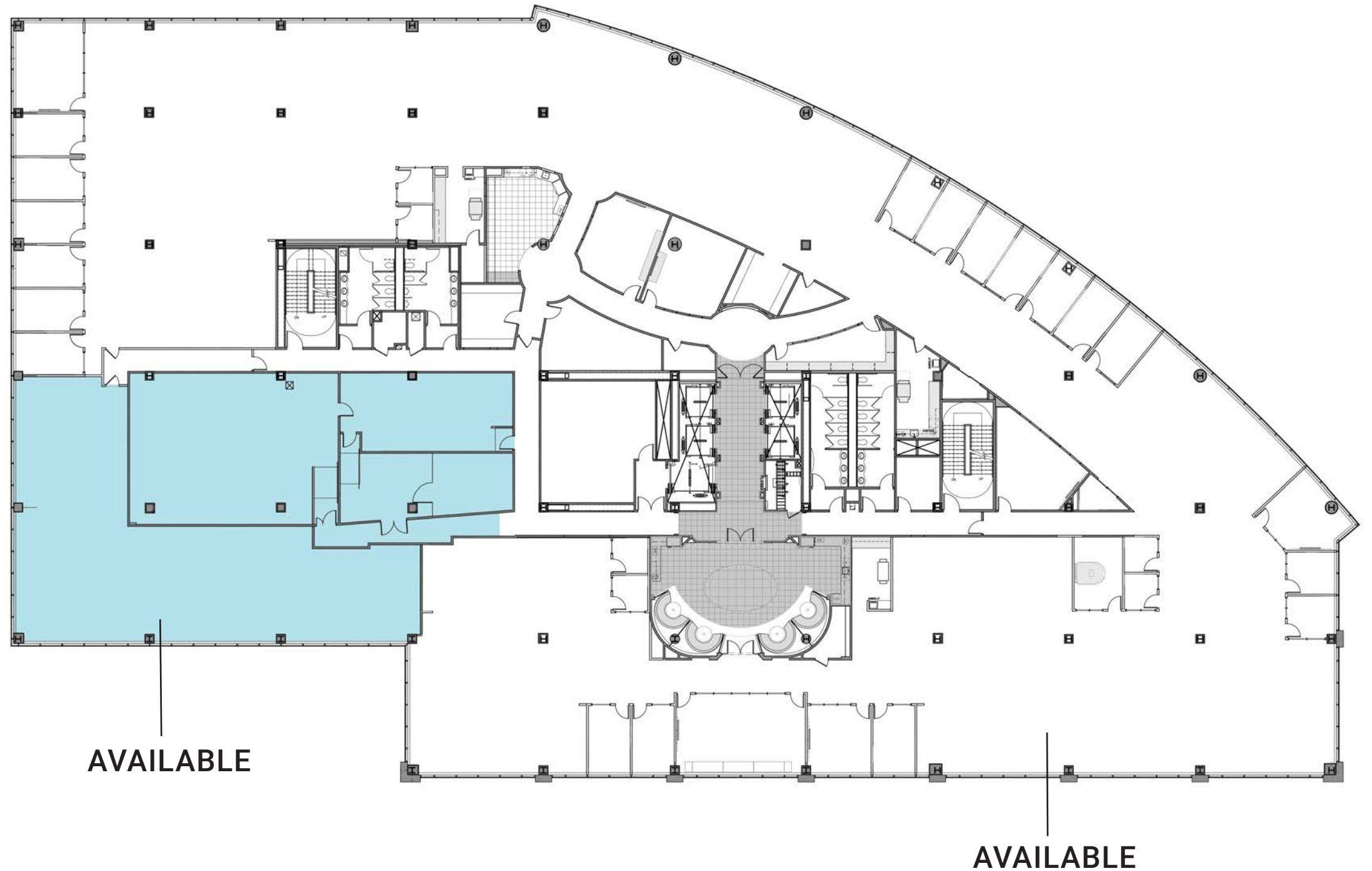
*\*ALTERNATE LOCATION FOR FIRE EGRESS*

# 801 MAIN AVENUE

2<sup>ND</sup> FLOOR

38,374 RSF

8,303 RSF



AVAILABLE

AVAILABLE

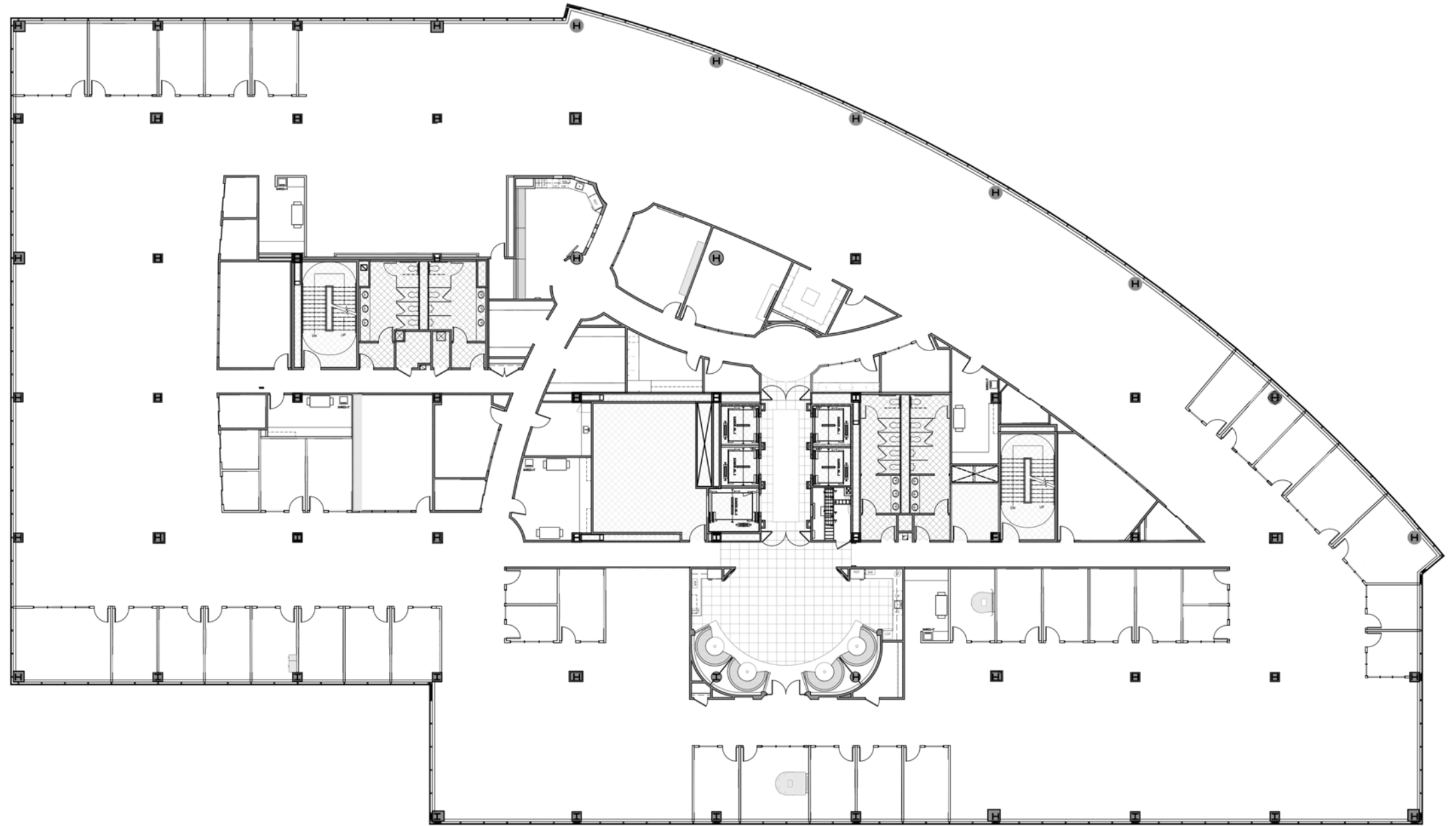


# 801 MAIN AVENUE

3<sup>RD</sup> FLOOR

46,848 RSF

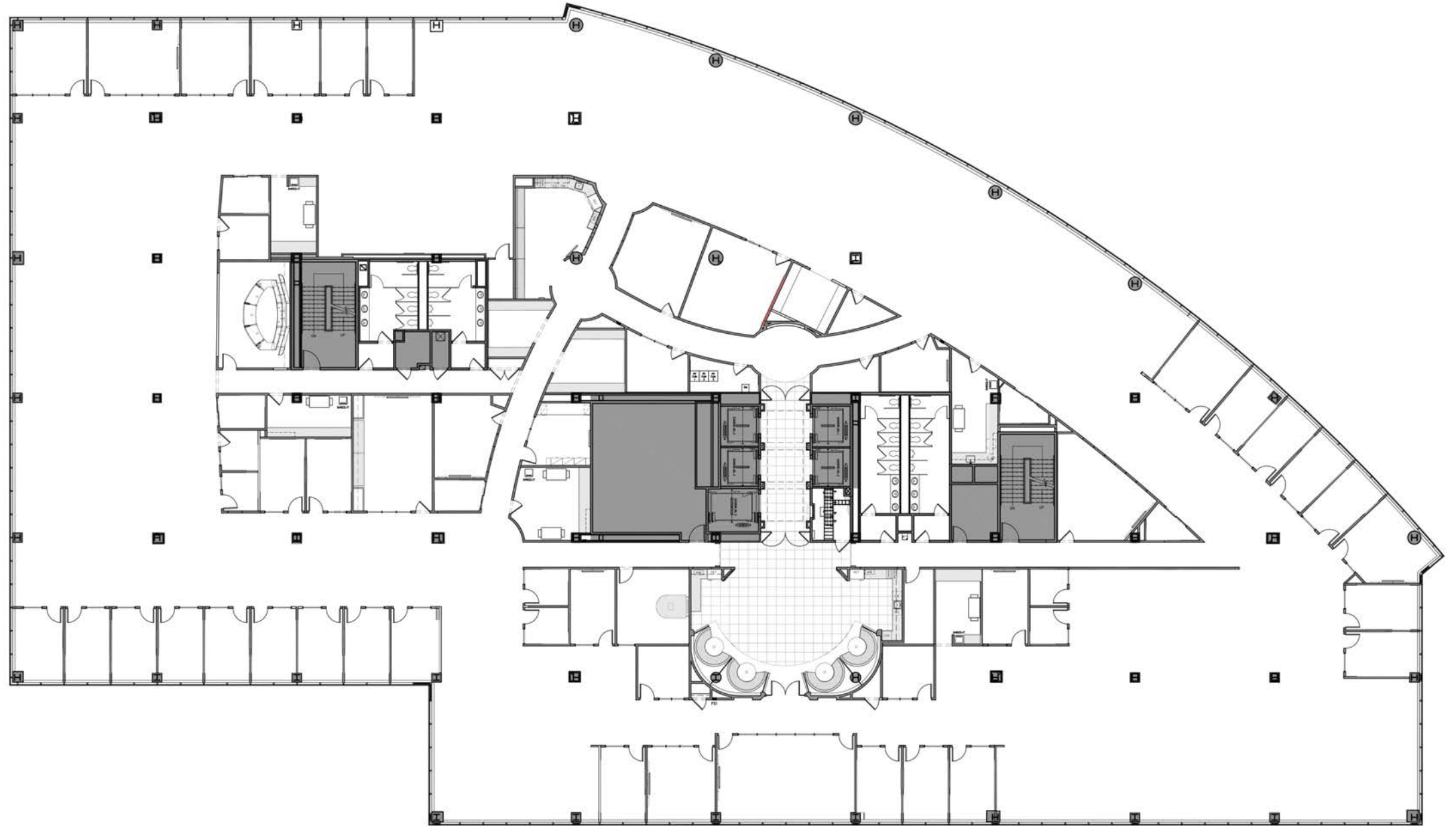
*\*Can be divided*



# 801 MAIN AVENUE

4<sup>TH</sup> FLOOR  
46,848 RSF

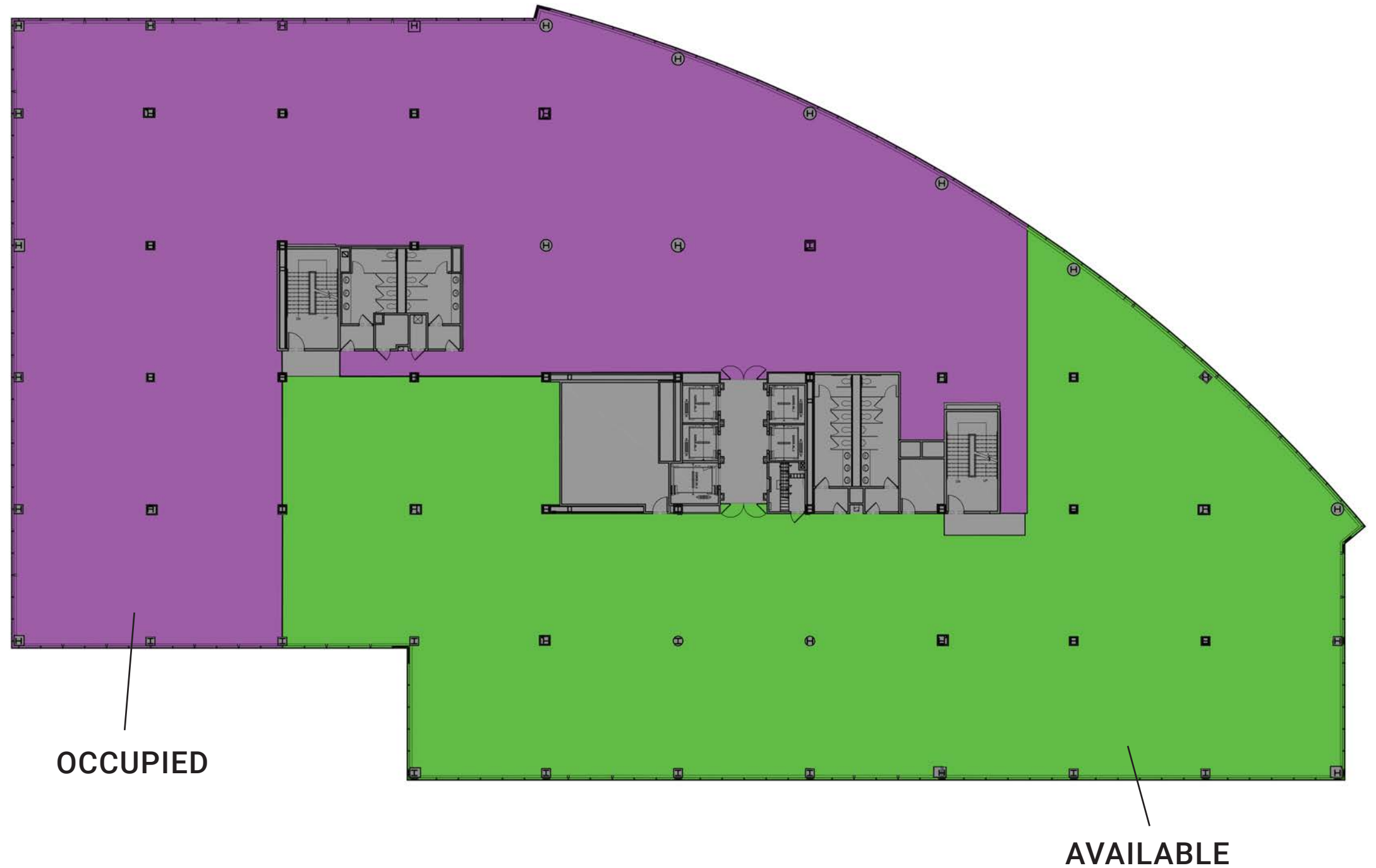
*\*Can be divided*



# 801 MAIN AVENUE

5<sup>TH</sup> FLOOR  
21,062 RSF

*\*Can be divided*





# FIND YOURSELF AT HOME & LIVE STEPS AWAY FROM WHERE YOU WORK!

The Curb Apartments , and One Glover Apartments offer Studio, 1, and 2 Bedroom apartments, flexible lease terms with furnished or non-furnished options, all complemented by resort-style amenities and ample outdoor space.

For more information :

(203) 855-1500

[Leasing@north-seven.com](mailto:Leasing@north-seven.com)



Visit [BLTLiveWorkPlay.com](http://BLTLiveWorkPlay.com) for availability

# CORPORATE REBATE PROGRAM

Your home at every stage! With a partnership between BLT and William Pitt-Julia B. Fee Sotheby's International Realty, you always find your home with us. For more information, please contact our corporate leasing representative below.

For more information :

**JANE MCWILLIAMS**

VP Business Development & Relocation

973.650.2445

[jmcwilliams@williampitt.com](mailto:jmcwilliams@williampitt.com)

For more information visit: [williampitt.com/fairfield](http://williampitt.com/fairfield)



# PREFERRED EMPLOYER PROGRAM

As a partner in the Preferred Employer Program, your employees can take advantage of exclusive perks, including discounts throughout Harbor Point. For more information, please contact our corporate leasing representative below.

For more information :

203.961.5000

[Leasing@BLTLiveWorkPlay.com](mailto:Leasing@BLTLiveWorkPlay.com)

Visit [BLTLiveWorkPlay.com](http://BLTLiveWorkPlay.com) for more information.



# BLT LiveWorkPlay

Please direct all inquiries to

**Leslie Whatley**  
Executive Vice President

203 644 1577  
lwhatley@bltooffice.com

**Brian Carcaterra**  
Executive Vice President

203 355 6017  
bcarcaterra@bltooffice.com

**Drew Steinberg**  
Leasing Manager

203 355 6057  
dsteinberg@bltooffice.com